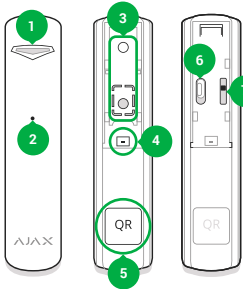


Glass break detector
 Model Name: **Ajax GlassProtect**
 Wireless glass break detector

GlassProtect is a wireless detector detecting glass break at a distance up to 9 meters. GlassProtect is connected to the Ajax security system via the protected Jeweller protocol, with an effective communication range of up to 1,000 meters without obstacles. It can operate up to 5 years from a battery and is designed for use indoors.

IMPORTANT: This Quick Start Guide contains general information about the GlassProtect. Before using the device, we recommend to reviewing the User Manual on the website: ajax.systems/support/devices/glassprotect

FUNCTIONAL ELEMENTS



- 1 - Light indicator.
- 2 - Microphone hole.
- 3 - SmartBracket attachment panel.
- 4 - External detector connection socket.
- 5 - QR code.
- 6 - Device switch.
- 7 - Tamper button.

CONNECTING AND SETTING UP

The detector is connected to the hub and set up via the Ajax Security system mobile application. To establish connection please locate the detector and the hub within the communication range and follow the device adding procedure.

A wire detector with a NC type contact may be connected to the GlassProtect using an outside-mounted terminal clamp. To lead out the wire from the GlassProtect body, break out the plug.

Before using the external detector connected to the terminal clamp, activate it in the GlassProtect settings.

To connect the detector to a third party security central unit using the Ajax uartBridge or Ajax ocBridge Plus integration module, follow the recommendations in the user manual of the respective device.

If the detector is located in a room requiring 24-hour control, activate the "Always active" mode - GlassProtect will be actuated in case of any detected glass break, even if the system is not in the arming mode.



LOCATION SELECTION

In selecting the GlassProtect installation location, please take into account the glass break detection range and presence of any objects within the room, which hinder the sound and radio signal transmission.

Do not install the detector.

- 1. Outside the premises (outdoors).
- 2. Nearby sirens and annunciators.
- 3. In a draught and in places with a rapid air circulation (air fans).
- 4. Nearby any metal objects and mirrors causing radio signal attenuation or screening it.
- 5. Within any premises with the temperature and humidity beyond the range of permissible limits.

Prior to the attachment of the detector to a surface with screws, please perform signal strength test as well as detection area test in the Ajax Security System application for at least a minute. This will demonstrate communication quality between the detector and the hub and ensures proper installation place selection.

Status indicator	Signal level
Lights with interruptions once every 1.5 seconds	Excellent signal level
Blinks 5 times per second	Good signal level
Blinks 2 times per second	Poor signal level
Lights up for a short time once every 1.5 seconds	No signal

GlassProtect is set up to detecting the distinctive sound of broken glass, consisting of a low-frequency hit and high-frequency tinkle of chips. The detector is not sensitive to any pops.

The GlassProtect detector microphone should be positioned at the angle no more than 90 degrees relative to the window(s). Make sure that any curtains, plants, furniture or other objects do not overcover the microphone hole. If the window is covered by thick curtains, place the detector between them and the window.

MOUNTING THE DEVICE

- 1. Fix the SmartBracket panel on the surface in two fixing points using the bundled screws or other no less reliable attachment hardware.
- 2. Put the detector on the panel - single blink of the light indicator will confirm that the tamper has been actuated.them and the window.

IMPORTANT INFORMATION

This product can be used across all EU member states.

This device in compliance with the essential requirements and other relevant provisions of Directive 2014/53/EU. All essential radio test suites have been carried out.

CAUTION: RISK OF EXPLOSION IF BATTERY IS REPLACED BY AN INCORRECT TYPE. DISPOSE OF USED BATTERIES ACCORDING TO THE INSTRUCTIONS

TECH SPECS

Sensitive element	Electret microphone
Glass break detection distance	Up to 9 m
Microphone coverage angle	180°
Anti-tamper switch	Yes
Frequency band	868.0-868.6 mHz
Maximum RF output power	Up to 20 mW
Modulation	FM
Radio signal	Up to 1,000 m (any obstacles absent)
Socket for connecting wire detectors	Yes, NC
Power supply	1 battery CR123A, 3 V
Battery life	Up to 5 years
Operating temperature range	From 0°C to +50°C
Operating humidity	Up to 90%
Overall dimensions	Ø20x90 mm
Weight	30 g

WARRANTY

Warranty for the Ajax Systems Inc. devices is valid for 2 years after the purchase and does not apply to the supplied battery. If the device does not work correctly, you should first contact the support service—in half of the cases, technical issues can be solved remotely!

The full text of the warranty is available on the website:

ajax.systems/ru/warranty

User Agreement:
ajax.systems/end-user-agreement

Technical support:
support@ajax.systems

COMPLETE SET

- 1. GlassProtect.
- 2. Battery CR123A(pre-installed).
- 3. Installation kit.
- 4. Quick Start Guide.

Manufacturer: Research and Production Enterprise "Ajax" LLC
 Address: Sklyarenko 5, Kyiv, 04073, Ukraine
 By request of Ajax Systems Inc.