

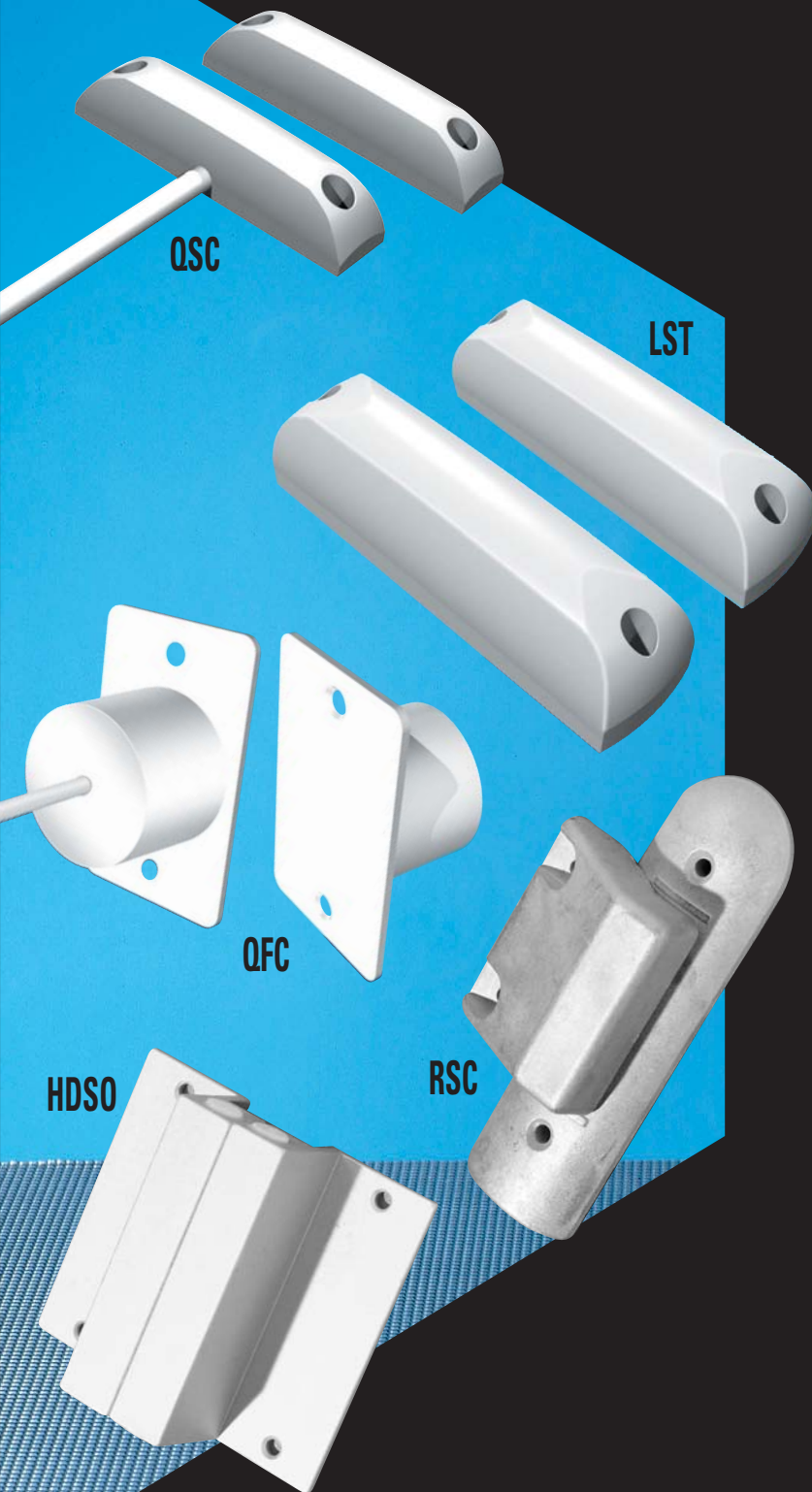
Contacts

Including Spectrum Range



ELMDENE

Security & Fire
Products



Benefits:

Extensive range of high quality Contacts
Choice of Surface and Flush Mounting
Range of Standard and High Security Contacts
Choice of cable length
Protected against moisture for long-life (not all)
Reliable operation and performance
Low maintenance and low life-time cost
Meet several European Country Approvals, Designed to comply with EN 50131 and PD6662 : 2004 Grade 3

Features:

- SURFACE AND FLUSH - 4 OR 6 WIRE SYSTEMS
- SURFACE AND FLUSH - TOP QUALITY RHODIUM CONTACTS
- SURFACE AND FLUSH - ENCAPSULATED AND SEALED MODELS AVAILABLE
- SURFACE AND FLUSH - SPECIAL CONFIGURATIONS AVAILABLE
- SURFACE - ABS OR ANODISED ALUMINIUM
- SURFACE - ANTI TAMPER DESIGNS AVAILABLE
- FLUSH - LOW COST ABS MOULDED SWITCHES
- HIGH SECURITY - SINGLE, DOUBLE OR TRIPLE BIASED AVAILABLE
- HIGH SECURITY - SURFACE AND FLUSH MOUNTED
- HIGH SECURITY - ACTIVE AND PASSIVE SUPERVISORY CIRCUITS

Contacts
you can rely on

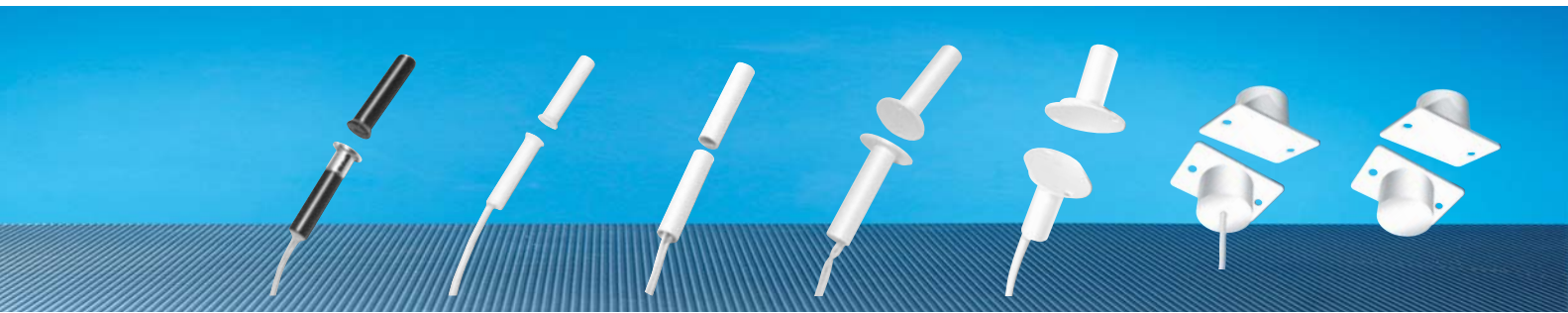
www.elmdene.co.uk



INTRUDER

Flush Contacts

Model	B	M	F	BP	MDP	QFC	QFT
-------	---	---	---	----	-----	-----	-----



Application	A small flush fitting unit designed to work on wooden doors	Pencil type with flange flush fitting unit designed to work on wooden doors	A Pencil type flush fitting unit designed to work on wooden doors	A small flush fitting unit designed to work on wooden doors	Large flush fitting unit designed to work on wooden or metal doors	Medium flush fitting contact designed to work on wooden doors. Integral resistors for use on FSL systems single or multiple doors. Can also be used on standard D/P systems	Medium flush fitting contact designed to work on wooden doors. Integral resistors for use on FSL systems, single or multiple doors. Available March 06
Material	ABS/Brass	ABS	ABS	ABS	ABS	ABS	ABS
Faceplate colour of contact	Silver	White	White/Brown	White/Brown	White	White	White

Contact Details

Contact-Length (mm)	34	34	34	34	34	15	15
Flange Diameter (mm)	12	10	8	10	38 (Oval)	36 x 22.5	36 x 22.5
Stand-off Flange Diameter (mm)	n/a	n/a	n/a	n/a	24	n/a	n/a
Body Diameter (mm)	8	8	8	8	12	20	20
Fixing	Push In	Push In	Push In	Push In	Small Screws	Small Screws	Small Screws

Magnet Details

Magnet-Length (mm)	34	34	34	34	34	15	15
Flange Diameter (mm)	9	10	8	10	38 (Oval)	36 x 22.5	36 x 22.5
Stand-off Flange Diameter (mm)	n/a	n/a	n/a	n/a	24	n/a	n/a
Body Diameter (mm)	8	8	8	8	12	20	20
Fixing	Push In	Push In	Push In	Push In	Small Screws	Small Screws	Small Screws

Contact Type and Operation

Reed Type	Standard	Standard	Standard	Standard	Standard	Standard	Standard
Number of Reeds	1	1	1	1	1	1	1
Operating Gap Maximum (mm)	10	10	10	10	7	20	20
Encapsulation	Potted	Potted	Potted	Potted	Potted	Potted	Enclosed
Weight (gms - reed & magnet)	12	11	35	13	80	36	36

Standard Range

Number of Wires	4	4	4	4	4	3 or 6	3 Terminals
Resistors Fitted	No	No	No	No	No	Yes	Yes
Cable Length (cm)	25	25	25	25	25	100	0
Stainless Steel Cable Protection	No	No	No	No	No	No	n/a

Classification

EN50131 Grade	3*	3*	3*	3*	3*	3*	3*
Environmental Class	III	III	III	III	III	III	III
Protection	IP67	IP67	IP67	IP67	IP67	IP67	IP43

Options (May be subject to volumes)

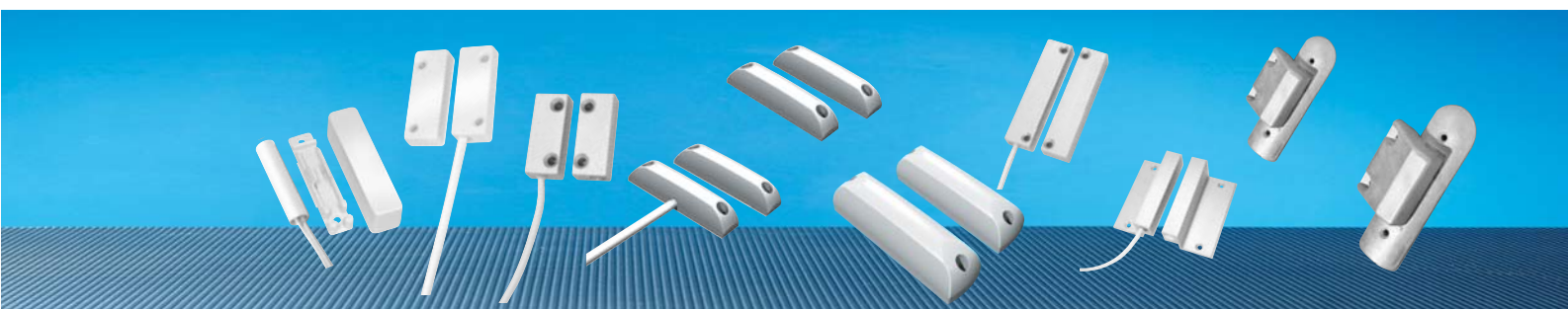
3 Wire with EOL Resistors**	Yes	Yes	Yes	Yes	Yes	n/a	n/a
6 Wire with EOL Resistors**	Yes	Yes	Yes	Yes	Yes	Standard	n/a
Extra Cable per Metre	Yes	Yes	Yes	Yes	Yes	Yes	n/a
Double Reed	Yes	Yes	Yes	Yes	Yes	No	No
Changeover Reed	Yes	Yes	Yes	Yes	Yes	No	No

3* Suitable for use in a grade 3 system - PD6662:2004

** See Three/Six Wire Range

Surface Contacts

Model	SFU/SFE	S	SM	QSC	QST	LST	HD	HDSO	RSL	RSC
-------	---------	---	----	-----	-----	-----	----	------	-----	-----



Application	Small surface flush fitting contact designed to work on wooden or metal doors	Small surface fitting contact designed to work on wooden or metal doors	Small metal surface fitting contact designed to work on wooden or metal doors	Medium surface contact designed to work on large wooden or metal doors. Integral resistors for use on FSL systems, single or multiple doors	Medium surface contact designed to work on large wooden or metal doors. Integral resistors for use on FSL systems, single or multiple doors	Large surface contact with terminals, designed to work on wooden or metal doors. Integral resistors for use on FSL systems, single or multiple doors. Can also be used on standard D/P systems. Available March 06	Large surface contact designed to work on large wooden or metal doors.	Large surface contact designed to work on large wooden or metal doors, has built in standoff.	Small roller shutter contact designed to work on large wooden or metal doors.	Large Roller shutter contact designed to work on large wooden or metal roller shutter doors.
Material	ABS	ABS	Aluminium	ABS	ABS	ABS	Aluminium	Aluminium	Aluminium	Aluminium
Colours	White /Brown	White/ Brown	Silver	White	White	White	Silver	Silver	Silver	Silver

Contact Details

Contact - Length (mm)	57	38	38	67	67	93	80	80	94	175
Width (mm)	14	14	16	14	14	25.3	19	32	40	52
Depth (mm)	13.5	8.5	9.5	12	12	25.5	12.5	45	15	15

Magnet Details

Magnet - Length (mm)	57	38	38	67	67	93	80	80	50	85
Width (mm)	14	14	16	14	14	25.3	19	32	55	70
Depth (mm)	13.5	8.5	9.5	12	12	25.5	12.5	45	35	35

Contact Type and Operation

Reed type	Standard	Standard	Standard	Standard	Standard	Standard	Standard	Standard	Standard	Standard
Number of Reeds	1	1	1	1	1	1	1	1	1	1
Operating Gap Maximum (mm)	10	25	15	20	20	40	25	25	70	70
Encapsulation	Potted	Potted	Potted	Potted	Enclosed	Enclosed	Potted	Potted	Potted	Potted
Weight (gms - reed & magnet)	46	17	43	32	32	50	106	175	226	361

Standard Range

Number of Wires	4	4	4	3 or 6	0	0	4	4	4	4
Resistors Fitted	No	No	No	Yes	Yes	Yes	No	No	No	No
Cable Length (cm)	25	25	25	100	3 Terminals	6 Terminals	50	50	100	100
Stainless Steel Cable Protection (cm)	No	No	No	No	n/a	n/a	Option	Option	50	50

Classification

EN50131 Grade	3*	3*	3*	3*	3*	3*	3*	3*	3*	3*
Environmental Class	III	III	III	III	III	III	III	III	III	III
Protection	IP67	IP67	IP67	IP67	IP43	IP43	IP67	IP67	IP67	IP67

Options (May be subject to volumes)

3 Wire with EOL Resistors**	Yes	Yes	Yes	n/a	n/a	n/a	Yes	Yes	Yes	Yes
6 Wire with EOL Resistors**	Yes	Yes	Yes	n/a	n/a	n/a	Yes	Yes	Yes	Yes
Extra Cable per Metre	Yes	Yes	Yes	Yes	n/a	n/a	Yes	Yes	Yes	Yes
Extra Stainless Steel Cable Protection	No	No	No	No	n/a	n/a	Yes	Yes	Yes	Yes
Double Reed	Yes	Yes	Yes	No	No	No	Yes	Yes	Yes	Yes
Changeover Reed	Yes	Yes	Yes	No	No	No	Yes	Yes	Yes	Yes
Packing Spacers	No	No	Yes	No	No	No	Yes	No	No	No

3* Suitable for use in grade 3 system - PD6662:2004

** See Three/Six Wire Contacts

High Security Contacts

Type	Flush Contacts		Surface Contacts					
Model	FMBR	VS105	HSI	HDBR	HDBR -SO	VS222	VS302	VS303
Application	High Security flush fitting contact with cable, designed to work on wooden or metal doors	High Security flush fitting contact with cable, designed to work on wooden or metal doors	Small surface fitting unit designed to work on wooden or metal doors	Large surface contact designed to work on large wooden or metal doors.	Large surface contact designed to work on large wooden or metal doors, has built in standoff.	Large Roller shutter contact designed to work on large wooden or metal roller shutter doors.	Large surface contact designed to work on large wooden or metal doors.	High Security large surface contact designed to work on large wooden or metal doors, has tamper cover plate.
Material	N.C/Brass	Aluminium	ABS	Aluminium	Aluminium	Aluminium	Aluminium	Aluminium
Colours	Silver	Silver	White	Silver	Silver	Silver	Silver	Silver
Contact Details								
Contact - Length (mm)	34	80	39	80	80	175	109	109
Width (mm)	25.6mm	21	20	19	32	52	38	38
Depth (mm)	22mm	15	9	12.5	45	15	19	19
Magnet Details								
Magnet - Length (mm)	34mm	34	39	80	80	85	109	109
Width (mm)	25	25	14	19	32	70	38	38
Depth (mm)	22mm	22	9	12.5	45	35	19	19
Contact Type and Operation								
Reed Type	High Spec	High Spec	High Spec	High Spec	High Spec	High Spec	High Spec	High Spec
Number of Reeds	2	1	2	3	3	4	3	5
Biased Reeds	Single	Single	0	Single	Single	Double	Triple	Triple
Operating Gap maximum (mm)	15	10	10	17	17	10	10	5
Tamper (active/passive)	Passive	Passive	Active	Passive	Passive	Active	Passive	Active
Encapsulation	Potted	Potted	Potted	Potted	Potted	Potted	Potted	Potted
Weight (gms - reed & magnet)	64	82	20	121	127	330	295	305
Standard Range								
Number of Wires	4	4	4	4	4	6	4	4
Resistors Fitted	No	No	No	No	No	No	No	No
Cable Length (cm)	100	150	50	150	150	100	100	100
Stainless Steel Cable Protection (cm)	n/a	n/a	No	No	No	50	50	50
Classification								
EN50131 Grade	3*	3*	3*	3*	3*	3*	3*	3*
Environmental Class	III	III	III	III	III	III	III	III
Protection	IP67	IP67	IP67	IP67	IP67	IP67	IP67	IP67
Options (May be subject to volumes)								
3 Wire with EOL Resistors**	Yes	Yes	Yes	Yes	Yes	Yes	Yes	Yes
6 Wire with EOL Resistors**	Yes	Yes	Yes	Yes	Yes	Yes	Yes	Yes
Extra Cable per Metre	Yes	Yes	Yes	Yes	Yes	Yes	Yes	Yes
Stainless Steel Cable Protection	No	No	No	Yes	Yes	n/a	n/a	n/a
Packing Spacers	No	No	Yes	Yes	No	No	No	No

3* Suitable for use in grade 3 system - PD6662:2004

** See Three/Six Wire Contacts

Spectrum Range

Three & Six Wire Contacts

Foreword

Three & Six Wire Contacts feature standard contacts with integrated resistors for use with a range of control panels incorporating Fully Supervised Loop (FSL) wiring. Note: 3 and 6 terminal contacts are also available, see flush and surface contacts.

Six Wire Contacts can be configured for FSL wiring with series or parallel connected resistors and are also suitable for use in standard 4 wire systems (where no resistors are required). In each case the contacts can be configured for single or double door connection.

The design has been made to not only save Engineer time in wiring the product, but also Service time, as one contact can be retro fitted into non supervised systems.

Three & Six Wire Contacts are fully compliant with EN50131 / PD6662:2004 and suitable for use in Grade 3 systems.

All standard cabled contacts are available in three & six wire format; listed below are the most common flush and surface versions.

Three & Six wire contacts are colour coded for ease of identification and to associate correct resistor values to corresponding control panels. Contacts with resistor values for other control panels can also be provided where required.

Type	Flush Contacts				Surface Contacts							
Model	M	BP	MDP	QFC	S	SM	QSC	HD	HDSO	RSL	RSC	

Application: All data as the standard range products.

Three & Six Wire Spectrum Range												
Resistors Fitted	Yes	Yes	Yes	Yes	Yes	Yes	Yes	Yes	Yes	Yes	Yes	Yes
Number of Wires	3/6	3/6	3/6	3/6	3/6	3/6	3/6	3/6	3/6	3/6	3/6	3/6
Cable Length (cm)	100	100	100	100	100	100	100	100	100	100	100	100
Stainless Steel Protection (cm)	n/a	n/a	n/a	n/a	n/a	n/a	Option	n/a	Option	50	50	
Classification												
EN50131 Grade	3*	3*	3*	3*	3*	3*	3*	3*	3*	3*	3*	3*
Environmental Class	III	III	III	III	III	III	III	III	III	III	III	III
Protection	IP67	IP67	IP67	IP67	IP67	IP67	IP67	IP67	IP67	IP67	IP67	IP67

Three & Six Wire Contact Colour Code Selection

IMPORTANT - Colour Code selection should be made in accordance with Control Panel AND Resistor Values

Resistor Values	Control Panels and Colour Code	
4k7 / 2k2	RED (RD):	ADE - Bosch - Castle - Menvier - Pyronix - Scantronic - Texecom
1k / 1k	Green (GN):	Honeywell
8k2 / 8k2	Blue (BL):	Guardall
4k7 / 4k7	Grey (GY):	Aritech - Pyronix
6k8 / 4k7	Purple (PU):	Guardtec
2k2 / 2k2	Turquoise (TQ):	Bosch - Europlex

Other resistor values available - contact Elmdene sales

3* Suitable for use in Grade 3 system - PD6662:2004

How To Choose The Correct Elmdene Contact For Your Application

From the brochure determine:

- * Type of contact – Surface or Flush.
- * Does it need to be a High Security contact?
- * Choose ABS or Aluminium contact as required, suitable for Wooden and or Metal doors as indicated.

Contacts are available in 3, 4 and 6 wire versions for different applications as below:

- * 3 Wire – Contact with integral resistors.
- * 3 Wire – Contact with a changeover reed.
- * 4 Wire – Standard contact, 2 wires for alarm, 2 wires for tamper.
- * 6 Wire – Contact with integral resistors, 6 wires enables configuration in standard D/P or FSL mode.

Other options available if required:

- * ABS contacts are normally supplied in white, brown is also available for some contacts.
- * Longer lengths of Cable / Stainless steel are available in 100cm / 50cm steps respectively.
- * Stainless Steel protection is an option on some contacts if required – check brochure.
- * Double Reed contacts for switching two electrically separate systems. (Suffix product code with 'DR')

How To Choose The Product Code For Your Contact

The product code comprises of up to six elements:

1. **Number** of wires.
2. **Model**.
3. **Colour** (ABS contact).
4. **Length** of cable or stainless steel in cm.
5. **Stainless Steel** cable protection if required (SS).
6. **Colour Code** (resistor versions).

Note: where elements are standard features they can be omitted from the product code.

Example of product codes:

1	2	3	4	5	6	Product Codes are written in the following form:	Contact Description
4	M					4M	Standard 4 wire 'M' contact
4	HD		50	SS		4HD-50-SS	'HD' with 50cm of stainless steel protection
3	RSC				RD	3RSC-RD	3 wire 'RSC' with integral resistors (Red)
3	HDSO					3HDSO	3 wire 'HDSO' with change-over reed
6	BP	brown			GN	6BP-BN-GN	6 wire 'BP', brown with integral resistors (Green)
4	SM					4SM-DR	4 wire 'SM' with two electrically separate reeds
	LST				RD	LST-RD	6 terminal 'LST' with integral resistors (Red)

ELMDENE INTERNATIONAL LIMITED
Rodney Road, Fratton, Portsmouth PO4 8SS United Kingdom
Tel: +44 (0)23 9273 9412 Fax: +44 (0)23 9281 1631
e-mail: sales@elmdene.co.uk

BS EN ISO 9000:2000 Quality Assured

www.elmdene.co.uk



ELMDENE

Security & Fire
Products