

ATS1220

ATS 4-zone DGP with Output Connector in plastic housing

Data Gathering Panels

Data Gathering Panels (DGP) are used to expand the number of alarm inputs on the system and allow inputs and relays to be connected at a location remote from the Advisor MASTER panel. DGPs communicate via poll & reply messages and send alarms to the control panel for processing. The DGPs collect information from detectors, door contacts and other similar devices. There are DGPs available for conventional devices, wireless devices as well as for intelligent addressable devices. A special DGP is also available for collecting the information for either four doors or lifts.

System databus connection

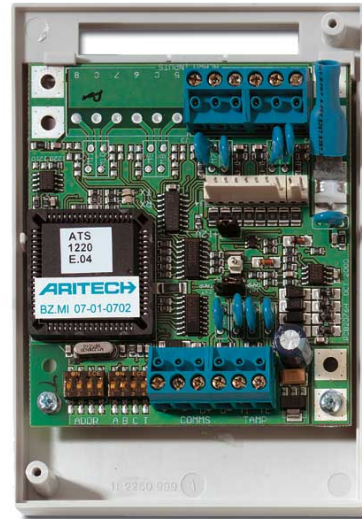
The system databus is used to connect Data Gathering Panels (to provide extra zones) and Arming Stations to the ATS control panel. Remote devices can be up to 1.5 km from an ATS control panel. Arming stations and Data Gathering Panels must be connected via a 2 pair twisted shielded data cable from the system databus connection. (WCAT 52 is recommended). The shield of the data cable should be connected to earth at the ATS control panel and should be left disconnected at any other end.

Functionality

Should a failure in communications occur, the Data Gathering Panel remembers the last alarm in a system, helping to identify possible reasons for faults. Up to 15 DGP's can be connected directly to the Advisor Master panel. For every DGP expanded to more than 16 inputs, the total number of Data Gathering Panels in a system reduces by one. If a system has all its Data Gathering Panels fully expanded to 32 inputs, the physical number of Data Gathering Panels in a system becomes 8.

Product Overview

4-zone DGP with Output Connector (ATS1644 plastic housing included). Depending on the basic capacity of the control panel up to 15 input expanders can be used at a maximum distance of 1,5km from the control panel.



Standard Features

- 4 inputs on board
- 8 OC outputs on board
- Plastic enclosure with opening tamper sensors

ATS1220

ATS 4-zone DGP with Output Connector in plastic housing

Specifications

Power supply	10.5 - 13.8 VDC
	Powered by the panel bus
Current consumption	53 mA
Inputs	4
OC outputs on board	8
Max. number of outputs	16
Max. distance from panel	1.5 km
Max. number per panel	15
Specified cable	WCAT 52/54 or equivalent
Data bus monitoring	Yes
Addressing	Individually, by DIP switches
PCB dimensions	90 x 80 mm
Housing dimensions (W x H x D)	124 x 87 x 34 mm
Operating temperature	-10° to +50°C

Ordering Information

Part No.	Description
ATS1210	ATS 8-zone DGP with Output Connector in plastic housing
ATS1211	ATS 8-zone DGP with Output Connector in steel housing
ATS1220	ATS 4-zone DGP with Output Connector in plastic housing