

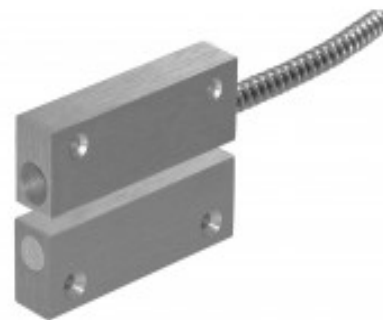
MC 240-S45

Magnetic Contact in Al Housing, NC

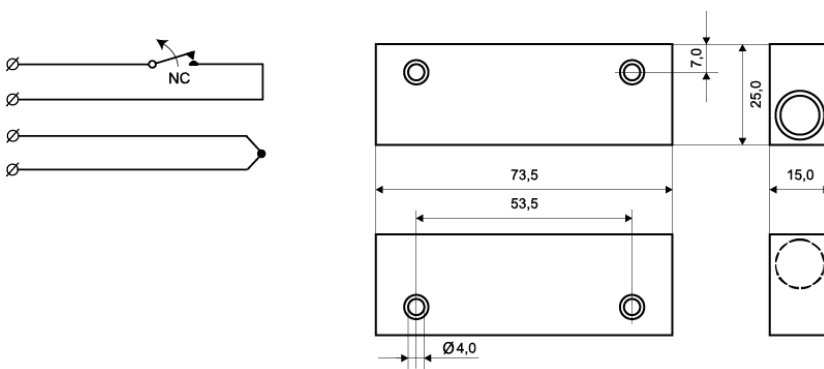


Technical data

Installation method	Surface mount
Contact function	Normally Closed (NC)
Approvals	EN 50131-2-6 Grade 2, Class IIIA, VdS G 193513 Class B, INCERT B-582-0013, SBSC 9-196, Class 1/2
Contact rating	48 VDC / 500 mA / 10 VA
Magnet type	Alnico 5
Make distance (wood) mm	42
Make distance (steel) mm	X
Tamper protection	Yes
Connection	Cable
Housing material	Aluminium
Operating temperature range	-40°C - +70°C
Housing protection class	IP 67
Contact dimensions (L x W x H) mm	74 x 25 x 15
Magnet dimensions (L x W x H) mm	74 x 25 x 15
Grade	2



The MC 240-S45 set is intended for exposed environments where a more durable magnetic contact is needed, such as doors, gates, etc. The set consists of MC 240-C contact with a NC contact function installed in MC 200-4 Al housing and an extra strong magnet in MC 200-5 Al housing, which allows for a wide opening gap. MC 240-S45 set contains a 1 m long stainless steel cable protection (MC T4).



ORDERING INFORMATION

Model	Description
MC 240-S45	Magnetic contact set, 6 m cable