

# TECHNICAL DATA SHEET







## POLITEC S.r.l.



## CERTIFICATO

Sistema di Gestione  
n. 1758

Si attesta che il sistema di gestione qualità di  
*This is to certify that the quality management system of*

**POLITEC S.R.L.**

Via Adda, 66/68  
20882 BELLUSCO (MB) - Italia

È conforme ai requisiti della norma/Fulfills the standard

**UNI EN ISO 9001:2008**

Questo certificato è valido per il seguente campo di applicazione  
*This certificate is valid for the following products/services*

**Progettazione e produzione di apparecchiature  
elettroniche per sistemi antintrusione**

Settore EA/EA scope  
**19**

Prima emissione **17/10/2012**  
Emissione corrente **17/10/2012**  
Certificato valido fino al **16/10/2015**

*[Signature]*

General Manager



Per informazioni puntuali ed aggiornate in merito ad eventuali variazioni intervenute nello stato della certificazione di cui al presente documento  
contattare il n. +39-011-595863 o inviare e-mail a: [globe@byglobe.it](mailto:globe@byglobe.it)

If you need further information about changes of this certificate scope please call n. +39 (0)11 595863 or send e-mail to: [globe@byglobe.it](mailto:globe@byglobe.it)

Eventuali esclusioni ammissibili sono riportate nel Manuale del Sistema di Gestione dell'organizzazione.

La validità del presente certificato è subordinata all'esito positivo delle verifiche di sorveglianza svolte con cadenza annuale.

The acceptable standard items exclusions are detailed on the company management handbook.

The validity of this certificate is subject to the satisfactory results of surveillance audits performed at least yearly

Politec Srl has the technology and the expertise to design and manufacture intrusion detection systems, offering the solution for the indoor and outdoor perimeter protection of your property.

Over the years we have developed a notable and innovative research and development resource that enables us to meet the requirements of a challenging and demanding market and to adapt to our customers needs, who are ever more aware of a need of security.

Aware of the need to maintain competitive costs, our products employ cutting edge technology, which gives ever increasing quality and reliability, whilst not neglecting that the products have to be easy to use and install. For example the implementation of our SMA technology that allows a single person to align the beam and the RS 485 serial connection that allows local or remote programming and control via the ADE-BUS LAN control card.

We are focused in offering solutions to our customers to protect their property and lives tangibly making their security, comfort and the quality of daily life better.

WS SMA - HIBRID SMA - SMA SOLAR are de-facto new product lines meeting all the market demands even for the most critical installation environments.

The quality of all our products are approved and certified and Politec is certified to ISO 9001:2008.



## ACTIVE INFRARED BARRIER

### CHARACTERISTICS

- Multiplexed active infrared (LO = 950nm) range 100m MAX
- Alignment SMA.
- 4 optics to obtain 2 ÷ 4 crossed dual beams
- Optical synchronization.
- Optical adjustment: V 20°, H 180°
- Adjustable reaction time 50 ÷ 500 mSec
- Protection degree IP 65
- Fog disqualification with dedicated output
- Mode OR (one interrupted double beam gives alarm) or AND (alarm given only if at least 2 double beams are interrupted)
- Outputs : Alarm, Tamper, Fog (low signal)
- Supply 10Vdc ÷ 30Vdc
- Thermostated heaters 15W Max (5W/optical + 5W pcb)
- Operating temperature -25° ÷ +65°
- Anodized aluminium structure;
- Wall or pole mounting
- Dimensions L 6cm—P 6cm—h. 50cm ÷ 100cm



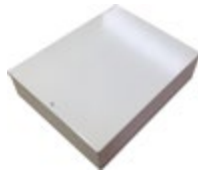
### SMA OPTICS

The new SMA technology (Single Man Alignment) allows the optical alignment thanks to efficient LED visible at 200m and buzzer for indicating the best signal without using other tools. This function is activated by pressing a button on each optic.

### ACCESSORIES

#### LAR 22 S

Power supplier  
12Vcc/24Vac



#### SAN/SD

Wall bracket



#### SAN/PL

Pole bracket



#### TB1 - TB2

Poles Ø 49mm  
1m - 2m



#### SANDOR TS

Thermostat  
Kit



CODE	DESCRIPTION	TYPE OF PRODUCT
DUAL SMA 805	Barrier composed with 2TX e 2RX programmable with 2 beams parallel or 4 crossed, H 50 cm. Power cons.: beams 135 mA - heaters 30W range max 100 m.	PAIR OF COLUMNS
DUAL SMA 810	Barrier composed with 2TX e 2RX programmable with 2 beams parallel or 4 crossed, H 100 cm. Power cons.: beams 135 mA - heaters 30W range max 100 m.	PAIR OF COLUMNS
SAN/PL	Pole / wall mounting kit	ACCESSORIES
SAN/SD	Wall mounting kit for one barrier (2pcs)	ACCESSORIES
SAN/TB1	Zincated pole H 1 m – Dia 49 mm.	ACCESSORIES
SAN/TB2	Zincated pole H 2 m – Dia 49 mm.	ACCESSORIES
LAR 22S	Power supplier 13,8Vdc 2.5A - 24Vac300VA	ACCESSORIES
SANDOR TS	Kit additional thermostat for Dual (2 pcs)	ACCESSORIES

## ACTIVE INFRARED BARRIER

### CHARACTERISTICS

- Multiplexed active infrared (LO = 950nm) range 100m MAX
- Alignment SMA.
- 8 (12) optics to obtain 4 (6) ÷ 16 (36) crossed dual beams
- Optical synchronization.
- Optics adjustment: V 20°, H 180°
- Adjustable reaction time 50 ÷ 500 mSec
- Protection degree IP 65
- Fog disqualification with dedicated output
- Mode OR (one interrupted double beam gives alarm) or AND (alarm given only if at least 2 double beams are interrupted) selectable from remote
- Outputs : Alarm, Tamper, Fog (low signal)
- Supply 10Vdc ÷ 30Vdc
- Thermostated heaters 60W Max (5W/optical + 10W pcb)
- Operating temperature -25° ÷ +65°
- Anodized aluminium structure;
- Wall or pole mounting
- Dimensions L 6cm—P 6cm—h. 50cm ÷ 400cm



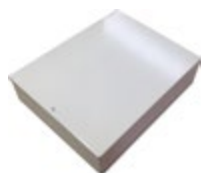
### SMA OPTICS

The new SMA technology (Single Man Alignment) allows the optical alignment thanks to efficient LED visible at 200m and buzzer for indicating the best signal without using other tools. This function is activated by pressing a button on each optic.

### ACCESSORIES

#### LAR 22 S

Power supplier  
12Vdc/24Vac



#### SAN/SD

Wall mounting  
Bracket



#### SAN/PL

Pole mounting  
Bracket



#### TB1 - TB2

Poles Φ 49mm  
1m - 2m



CODE	DESCRIPTION	TYPE OF PRODUCT
QUAD SMA 8010	4TX e 4RX programmable with 4 beams parallel or 8 crossed, H 100 cm. Power cons.: beams 150 mA - heaters 50W range max 100 m.	PAIR OF COLUMNS
QUAD SMA 8015	4TX e 4RX programmable with 4 beams parallel or 8 crossed, H 150 cm. Power cons.: beams 150 mA - heaters 50W range max 100 m.	PAIR OF COLUMNS
QUAD SMA 8020	4TX e 4RX programmable with 4 beams parallel or 8 crossed, H 200 cm. Power cons.: beams 150 mA - heaters 50W range max 100 m.	PAIR OF COLUMNS
QUAD SMA 8025	4TX e 4RX programmable with 4 beams parallel or 8 crossed, H 250 cm. Power cons.: beams 150 mA - heaters 50W range max 100 m.	PAIR OF COLUMNS
ESA SMA 8015	6TX e 6RX programmable with 6 beams parallel or 12 crossed, H 150 cm. Power cons.: beams 210 mA - heaters 85W range max 100 m.	PAIR OF COLUMNS
ESA SMA 8020	6TX e 6RX programmable with 6 beams parallel or 12 crossed, H 200 cm. Power cons.: beams 210 mA - heaters 85W range max 100 m.	PAIR OF COLUMNS
ESA SMA 8025	6TX e 6RX programmable with 6 beams parallel or 12 crossed, H 250 cm. Power cons.: beams 210 mA - heaters 85W range max 100 m.	PAIR OF COLUMNS
ESA SMA 8030	6TX e 6RX programmable with 6 beams parallel or 12 crossed, H 300 cm. Power cons.: beams 210 mA - heaters 85W range max 100 m.	PAIR OF COLUMNS
SAN/PL	Pole / wall mounting kit	ACCESSORIES
SAN/SD	Wall mounting kit for one barrier (2pcs)	ACCESSORIES
SAN/TB1	Zincated pole H 1 m – Dia 49 mm.	ACCESSORIES
SAN/TB2	Zincated pole H 2 m – Dia 49 mm.	ACCESSORIES
LAR 22S	Power supplier 13,8Vdc 2.5A - 24Vac300VA	ACCESSORIES

## ACTIVE INFRARED IN COLUMN

### CHARACTERISTICS

- Multiplexed active infrared (LO = 950nm) range 100m MAX
- Optics TX and RX in the same column and managed by unic motherboard
- Alignment SMA.
- Up to 64 crossed dual beams with 4TX and 4RX .
- Synchronization wired or optical.
- Optics adjustment: V 20°, H 180°
- Adjustable reaction time 50 ÷ 500 mSec
- Environmental disqualification selectable on 2 levels
- Anti scanning and Anti interferences functions
- Mode OR (one interrupted double beam gives alarm) or AND (alarm given only if at least 2 double beams are interrupted)
- 3 inputs for remote controls
- Remote controls for AND Beams, Beams EXCLUSION and BYPASS
- Anti-crawling function
- Possibility of Management /programming/controls/adjustment by ADEBUS EXPLORER
- Outputs: Alarm, Tamper, Anti Masking, Disqualification, RS485.
- Thermostated heating 24Vac 56W Max (5W/optics + 4x30W)
- Pole or wall mounting
- Operating temperature -25° ÷ +65°
- Anodized aluminium structure;
- Wall or pole mounting
- Dimensions L 6cm—P 6cm—h. 50cm ÷ 400cm



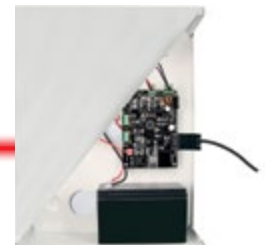
### SMA OPTICS

The new SMA technology (Single Man Alignment) allows the optical alignment thanks to efficient LED visible at 200m and buzzer for indicating the best signal without using other tools. This function is activated by pressing a button on each optic.

### ACCESSORIES

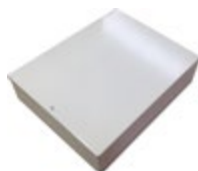
#### ADEBUS

Up to 32 column connectable.  
Software ADEBUS EXPLORER included



#### LAR 22 S

Power supplier  
12Vcc/24Vac



#### SAN/SD

Wall mounting  
bracket



#### SAN/PL

Pole mounting  
bracket



#### TB1 - TB2

Poles  $\Phi$  49mm  
1m - 2m





CODE	DESCRIPTION	TYPE OF PRODUCT
<b>PLUS SMA 9410</b>	Column composed with 4 dual optical 2TX + 2RX H 100 cm. Power cons.: beams 135 mA - heaters 30W range max 100 m.	SINGLE COLUMN
<b>PLUS SMA 9415</b>	Column composed with 4 dual optical 2TX + 2RX H 150 cm. Power cons.: beams 135 mA - heaters 30W range max 100 m.	SINGLE COLUMN
<b>PLUS SMA 9420</b>	Column composed with 4 dual optical 2TX + 2RX H 200 cm. Power cons.: beams 135 mA - heaters 30W range max 100 m.	SINGLE COLUMN
<b>PLUS SMA 9615</b>	Column composed with 6 dual optical 3TX + 3RX H 150 cm. Power cons.: beams 135 mA - heaters 30W range max 100 m.	SINGLE COLUMN
<b>PLUS SMA 9620</b>	Column composed with 6 dual optical 3TX + 3RX H 200 cm. Power cons.: beams 135 mA - heaters 30W range max 100 m.	SINGLE COLUMN
<b>PLUS SMA 9815</b>	Column composed with 8 dual optical 4TX + 4RX H 150 cm. Power cons.: beams 135 mA - heaters 30W range max 100 m.	SINGLE COLUMN
<b>PLUS SMA 9820</b>	Column composed with 8 dual optical 4TX + 4RX H 200 cm. Power cons.: beams 135 mA - heaters 30W range max 100 m.	SINGLE COLUMN
<b>PLUS SMA 9825</b>	Column composed with 8 dual optical 4TX + 4RX H 250 cm. Power cons.: beams 135 mA - heaters 30W range max 100 m.	SINGLE COLUMN
<b>PLUS SMA 9830</b>	Column composed with 8 dual optical 4TX + 4RX H 300 cm. Power cons.: beams 135 mA - heaters 30W range max 100 m.	SINGLE COLUMN
<b>PLUS SMA 9835</b>	Column composed with 8 dual optical 4TX + 4RX H 350 cm. Power cons.: beams 135 mA - heaters 30W range max 100 m.	SINGLE COLUMN
<b>PLUS SMA 9840</b>	Column composed with 8 dual optical 4TX + 4RX H 400 cm. Power cons.: beams 135 mA - heaters 30W range max 100 m.	SINGLE COLUMN
<b>PLUS SMA 9210 RX / PLUS SMA 9210 TX</b>	Column with 2 dual optical RX or TX H 100 cm.	SINGLE COLUMN
<b>PLUS SMA 9215 RX / PLUS SMA 9215 TX</b>	Column with 2 dual optical RX or TX H 150 cm.	SINGLE COLUMN
<b>PLUS SMA 9220 RX / PLUS SMA 9220 TX</b>	Column with 2 dual optical RX or TX H 200 cm.	SINGLE COLUMN
<b>PLUS SMA 9315 RX / PLUS SMA 9315 TX</b>	Column with 3 dual optical RX or TX H 150 cm.	SINGLE COLUMN
<b>PLUS SMA 9415 RX / PLUS SMA 9415 TX</b>	Column with 4 dual optical RX or TX H 150 cm.	SINGLE COLUMN
<b>PLUS SMA 9420 RX / PLUS SMA 9420 TX</b>	Column with 4 dual optical RX or TX H 200 cm.	SINGLE COLUMN
<b>PLUS SMA 9425 RX / PLUS SMA 9425 TX</b>	Column with 4 dual optical RX or TX H 250 cm.	SINGLE COLUMN
<b>PLUS SMA 9430 RX / PLUS SMA 9430 TX</b>	Column with 4 dual optical RX or TX H 300 cm.	SINGLE COLUMN
<b>PLUS SMA 9435 RX / PLUS SMA 9435 TX</b>	Column with 4 dual optical RX or TX H 350 cm.	SINGLE COLUMN
<b>PLUS SMA 9440 RX / PLUS SMA 9440 TX</b>	Column with 4 dual optical RX or TX H 400 cm.	SINGLE COLUMN
<b>SAN/PL</b>	Pole / wall mounting kit	ACCESSORIES
<b>SAN/SD</b>	Wall mounting kit for one barrier (2pcs)	ACCESSORIES
<b>SAN/TB1</b>	Zincated pole H 1 m – Dia 49 mm.	ACCESSORIES
<b>SAN/TB2</b>	Zincated pole H 2 m – Dia 49 mm.	ACCESSORIES
<b>LAR 22S</b>	Power supplier 13,8Vdc 2.5A - 24Vac300VA	ACCESSORIES
<b>ADEBUS</b>	Monitoring control panel for digital systems connected with RS485. In metal box with power supplier.	CONTROL PANEL
<b>ADEBUS ESP</b>	Expansion module for ADEBUS with 16 output relay. Max. 6 modules for ADEBUS	ACCESSORIES
<b>ADEBUS S2</b>	Expansion module for ADEBUS to have second serial RS485 line	ACCESSORIES

## ACTIVE INFRARED IN COLUMN

### CHARACTERISTICS

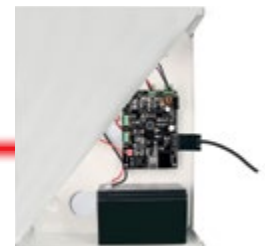
- Multiplexed active infrared (LO = 950nm) range 100m MAX
- Optics TX and RX in the same column and managed by a unique motherboard
- Alignment SMA
- Up to a 64 crossed double beams with 4TX and 4RX coupled with another same column.
- Optical or wired synchronization.
- Optical adjustment: V 20°, H 180°
- Adjustable reaction time 50 ÷ 500 mSec
- Fog disqualification (2 levels) with dedicated output.
- Anti-scanning and Anti interferences functions
- Mode OR (one interrupted double beam gives alarm) or AND (alarm given only if at least 2 double beams are interrupted)
- 3 inputs for remote controls
- Remote controls for AND Beams, Beams EXCLUSION and BYPASS
- Anti-crawling function
- Possibility of Management /programming/controls/adjustment by ADEBUS EXPLORER
- Outputs: Alarm, Tamper, Anti Masking, Disqualification, RS485.
- Thermostatically-controlled heating 24Vac 45W Max (5W/optics + 5W)
- Operating temperature -25° ÷ +65°
- Anodized aluminium structure
- Dimensions : Tube Φ 8cm, Base Φ 30cm; height: from 1,2 m up to 3 m



### ACCESSORIES

#### ADEBUS

Managing up to 32 columns with software, TCP/IP facility



#### POB 30

Cable pit



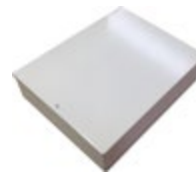
#### LAMP 30

Globe with lamp support



#### LAR 22 S

Power supplier  
12Vcc/24Vac



#### LAR 18

Power supplier into  
sealed box  
12 Vcc/24 Vac



#### LAR B4

Battery for LAR 18 into  
sealed box  
12 Vcc 4 Ah





CODE	DESCRIPTION	TYPE OF PRODUCT
<b>MES SMA 9120</b>	Column composed with 4 dual optical 2TX + 2RX H 120 cm. Power cons. : beams 135 mA - heaters 30W Range max 100 m.	SINGLE COLUMN
<b>MES SMA 9160</b>	Column composed with 6 dual optical 3TX + 3RX H 160 cm. Power cons. : beams 145 mA - heaters 40 W Range max 100 m.	SINGLE COLUMN
<b>MES SMA 9200</b>	Column composed with 8 dual optical 4TX + 4RX H 200 cm. Power cons. : beams 150 mA - heaters 50W Range max 100 m.	SINGLE COLUMN
<b>MES SMA 9250</b>	Column composed with 8 dual optical 4TX + 4RX H 250 cm. Power cons. : beams 150 mA - heaters 50W Range max 100 m.	SINGLE COLUMN
<b>MES SMA 9300</b>	Column composed with 8 dual optical 4TX + 4RX H 300 cm. Power cons. : beams 150 mA - heaters 50W Range max 100 m.	SINGLE COLUMN
<b>MES SMA 9120 RX / MES SMA 9120 TX</b>	Column with 2 dual optical RX or TX H 120 cm.	SINGLE COLUMN
<b>MES SMA 9160 RX / MES SMA 9160 TX</b>	Column with 3 dual optical RX or TX H 160 cm.	SINGLE COLUMN
<b>MES SMA 9200 RX / MES SMA 9200 TX</b>	Column with 4 dual optical RX or TX H 200 cm.	SINGLE COLUMN
<b>MES SMA 9250 RX / MES SMA 9250 TX</b>	Column with 4 dual optical RX or TX H 250 cm.	SINGLE COLUMN
<b>MES SMA 9300 RX / MES SMA 9300 TX</b>	Column with 4 dual optical RX or TX H 300 cm.	SINGLE COLUMN
<b>POB 30</b>	Cable pit for Parvis and Mana columns	ACCESSORIES
<b>LAMP 30</b>	Lamp bowl 30cm Diameter	ACCESSORIES
<b>LAR 22S</b>	Power supplier 13,8Vdc 2.5A - 24Vac300VA	ACCESSORIES
<b>LAR 18</b>	Power supplier - 12 Vdc 0,9A - 24 Vca 2,5A.	ACCESSORIES
<b>LAR B 4</b>	Battery 4Ah for LAR 18 in sealed container.	ACCESSORIES
<b>ADEBUS</b>	Monitoring control panel for digital systems connected with RS485. In metal box with power supplier.	CONTROL PANEL
<b>ADEBUS ESP</b>	Expansion module for ADEBUS with 16 output relay. Max. 6 modules for ADEBUS	ACCESSORIES
<b>ADEBUS S2</b>	Expansion module for ADEBUS to have second serial RS485 line	ACCESSORIES

## ACTIVE INFRARED COLUMN

### CHARACTERISTICS

- Multiplexed active infrared (LO = 950nm) range 250m MAX
- Optics TX and RX in the same column and managed by a unique motherboard
- Alignment SMA
- Up to a 64 crossed double beams with 4TX and 4RX coupled with another same column.
- Optical or wired synchronization.
- Optical adjustment: V 20°, H 180°
- Adjustable reaction time 50 ÷ 500 mSec
- Fog disqualification (2 levels) with dedicated output.
- Anti-scanning and Anti interferences functions
- Mode OR (one interrupted double beam gives alarm) or AND (alarm given only if at least 2 double beams are interrupted)
- 3 inputs for remote controls
- Remote controls for AND Beams, Beams EXCLUSION and BYPASS
- Anti-crawling function
- Possibility of Management /programming/controls/adjustment by ADEBUS EXPLORER
- ZONING function (optional on request)
- Outputs: Alarm, Tamper, Anti Masking, Disqualification, RS485.
- 230Vac Power supply unit inside the column.
- Housing for battery 12V/7Ah
- Protection degree IP 65
- Thermostatically-controlled heating 24Vac 115W Max (5W/optics + 3x35 W + 5 W)
- Operating temperature -25° ÷ +65°
- Anodized aluminium structure.
- Optional wall mounting kit.
- Dimensions : L25cm—P 22cm—h. 1 m ÷ 4m. Base  $\Phi$  30cm



### SMA OPTICS

The new SMA technology (Single Man Alignment) allows the optical alignment thanks to efficient LED visible at 200m and buzzer for indicating the best signal without using other tools. This function is activated by pressing a button on each optic. RS485 output allows to manage through BUS and ADEBUS control panel the system by remote, keeping the classical relay outputs, with also the possibility of optical synchronization.

### ACCESSORIES

#### ADEBUS

Up to 32 column connectable. Software ADEBUS EXPLORER included.



#### POB 30



Cable pit. It simplifies the connection and installation with horizontal and vertical adjustment.

CODE	DESCRIPTION	TYPE OF PRODUCT
MANA IR SMA 10100 2X	Column composed with 4 Dual optical 2TX + 2RX H 100 cm. Supply 230V - -. Range max 100 m.	SINGLE COLUMN
MANA IR SMA 15100 3X	Column composed with 6 Dual optical 3TX + 3RX H 150 cm. Supply 230V - -. Range max 100 m.	SINGLE COLUMN
MANA IR SMA 15100 4X	Column composed with 8 Dual optical 4TX + 4RX H 150 cm. Supply 230V - -. Range max 100 m.	SINGLE COLUMN
MANA IR SMA 20100 3X	Column composed with 6 Dual optical 3TX + 3RX H 200 cm. Supply 230V - -. Range max 100 m.	SINGLE COLUMN
MANA IR SMA 20100 4X	Column composed with 8 Dual optical 4TX + 4RX H 200 cm. Supply 230V - -. Range max 100 m.	SINGLE COLUMN
MANA IR SMA 25100 4X	Column composed with 8 Dual optical 4TX + 4RX H 250 cm. Supply 230V - -. Range max 100 m.	SINGLE COLUMN

CODE	DESCRIPTION	TYPE OF PRODUCT
MANA IR SMA 30100 4X	Column composed with 8 Dual optical 4TX + 4RX H 300 cm. Supply 230V - -. Range max 100 m.	SINGLE COLUMN
MANA IR SMA 35100 4X	Column composed with 8 Dual optical 4TX + 4RX H 350 cm. Supply 230V - -. Range max 100 m.	SINGLE COLUMN
MANA IR SMA 40100 4X	Column composed with 8 Dual optical 4TX + 4RX H 400 cm. Supply 230V - -. Range max 100 m.	SINGLE COLUMN
MANA IR SMA 40100 8X	Column composed with 16 Dual optical 8TX + 8RX H 400 cm. Supply 230V - -. Range max 100 m.	SINGLE COLUMN

MANA IR SMA 15250 3X	Column composed with 6 Dual optical 3TX + 3RX H 150 cm. Supply 230V - -. Range max 250 m.	SINGLE COLUMN
MANA IR SMA 20250 3X	Column composed with 6 Dual optical 3TX + 3RX H 200 cm. Supply 230V - -. Range max 250 m.	SINGLE COLUMN
MANA IR SMA 20250 4X	Column composed with 8 Dual optical 4TX + 4RX H 200 cm. Supply 230V - -. Range max 250 m.	SINGLE COLUMN
MANA IR SMA 25250 4X	Column composed with 8 Dual optical 4TX + 4RX H 250 cm. Supply 230V - -. Range max 250 m.	SINGLE COLUMN
MANA IR SMA 30250 4X	Column composed with 8 Dual optical 4TX + 4RX H 300 cm. Supply 230V - -. Range max 250 m.	SINGLE COLUMN
MANA IR SMA 40250 4X	Column composed with 8 Dual optical 4TX + 4RX H 400 cm. Supply 230V - -. Range max 250 m.	SINGLE COLUMN
MANA IR SMA 40250 8X	Column composed with 16 Dual optical 8TX + 8RX H 400 cm. Supply 230V - -. Range max 250 m.	SINGLE COLUMN

MANA IR SMA 10100 2R / MANA IR SMA 10100 2T	Column 2 Dual optical RX or TX H 100 cm. Range max 100 m.	SINGLE COLUMN
MANA IR SMA 15100 3R / MANA IR SMA 15100 3T	Column 3 Dual optical RX or TX H 150 cm. Range max 100 m.	SINGLE COLUMN
MANA IR SMA 15100 4R / MANA IR SMA 15100 4T	Column 4 Dual optical RX or TX H 150 cm. Range max 100 m.	SINGLE COLUMN
MANA IR SMA 20100 3R / MANA IR SMA 20100 3T	Column 3 Dual optical RX or TX H 200 cm. Range max 100 m.	SINGLE COLUMN
MANA IR SMA 20100 4R / MANA IR SMA 20100 4T	Column 4 Dual optical RX or TX H 200 cm. Range max 100 m.	SINGLE COLUMN
MANA IR SMA 25100 4R / MANA IR SMA 25100 4T	Column 4 Dual optical RX or TX H 250 cm. Range max 100 m.	SINGLE COLUMN
MANA IR SMA 30100 4R / MANA IR SMA 30100 4T	Column 4 Dual optical RX or TX H 300 cm. Range max 100 m.	SINGLE COLUMN
MANA IR SMA 15250 3R / MANA IR SMA 15250 3T	Column 3 Dual optical RX or TX H 150 cm. Range max 250 m.	SINGLE COLUMN
MANA IR SMA 20250 3R / MANA IR SMA 20250 3T	Column 3 Dual optical RX or TX H 200 cm. Range max 250 m.	SINGLE COLUMN
MANA IR SMA 20250 4R / MANA IR SMA 20250 4T	Column 4 Dual optical RX or TX H 200 cm. Range max 250 m.	SINGLE COLUMN
MANA IR SMA 25250 4R / MANA IR SMA 25250 4T	Column 4 Dual optical RX or TX H 250 cm. Range max 250 m.	SINGLE COLUMN
MANA IR SMA 30250 4R / MANA IR SMA 30250 4T	Column 4 Dual optical RX or TX H 300 cm. Range max 250 m.	SINGLE COLUMN

CODE	DESCRIPTION	TYPE OF PRODUCT
ADEBUS	Monitoring control panel for digital systems connected with RS485.	CONTROL PANEL
ADEBUS ESP	Expansion module for ADEBUS with 16 output relay.	ACCESSORIES
ADEBUS S2	Expansion module for ADEBUS to have second serial RS485	ACCESSORIES
POB 30	Cable pit for Parvis and Mana columns	ACCESSORIES
MANA AC TOP	Anti climbing cap for MANA columns.	ACCESSORIES
MANA FOR	Base Mana reinforcement for columns exceeding 2 m. DX + SX - Black color.	ACCESSORIES
MANA SD	Wall bracket for MANA column ( 1 pz ).	ACCESSORIES



## ACTIVE MICROWAVE BARRIER

### CHARACTERISTICS

- Microwave barrier 24GHz in K band
- Settable range from 10m up to 250m MAX
- 4 channels settable.
- Adjustable gain and sensitivity
- Acoustic WALK-TEST
- Integrated multi-functional multi-meter with digit divided in 7 segments
- Operating temperature -25° ÷ +65°
- Protection degree IP 65
- 230Vac Power supply unit inside the column
- Housing for battery 12V/7Ah
- Anodized aluminium structure.
- Outputs: Alarm, Tamper
- Dimensions : L25cm—P 22cm—h. 1 m ÷ 4m. Base  $\Phi$  30cm

### ACCESSORIES

#### POB 30



Cable pit. It simplify the connetion and installation with horizontal and vertical adjustment.



CODE	DESCRIPTION	TYPE OF PRODUCT
<b>MANA MW 10250</b>	Barrier composed with 1 couple of microwaves MW H 100 cm. Supply 230V - allocable battery 12V 7Ah. Range max 250 m.	PAIR OF COLUMNS
<b>MANA MW 15250</b>	Barrier composed with 1 couple of microwaves MW H 150 cm. Supply 230V - allocable battery 12V 7Ah. Range max 250 m.	PAIR OF COLUMNS
<b>MANA MW 20250 2C</b>	Barrier composed with 2 couples of microwaves MW H 200 cm. Supply 230V - allocable battery 12V 7Ah. Range max 250 m.	PAIR OF COLUMNS
<b>POB 30</b>	Cable pit for Parvis and Mana columns	ACCESSORIES
<b>MANA AC TOP</b>	Anti climbing cap for MANA columns.	ACCESSORIES

## TRIPLE TECHNOLOGY BARRIER

### CHARACTERISTICS

- Multiplexed active infrared (LO = 950nm) range 250m MAX
- Microwave 24GHz in K band - 4 channels settable - Settable range from 10m up to 250m MAX
- DT3: optional Doppler for blind zone protection, settable range from 1m up to 8m
- Infrared with SMA technology alignment
- Optical or wired synchronization.
- Parallel or crossed beams function settable.
- Adjustable reaction time 50 ÷ 500 mSec
- Housing for battery 12V/7Ah
- Protection degree IP 65
- Fog disqualification (2 levels) with dedicated output.
- Anti-scanning and Anti interferences functions
- Mode OR (one interrupted double beam gives alarm) or AND (alarm given only if at least 2 double beams are interrupted)
- Remote controls for AND Beams, Beams EXCLUSION and BYPASS
- Anti-crawling function
- Possibility of Management /programming/controls/adjustment by ADEBUS EXPLORER
- ZONING function (option on request)
- Outputs: MW Alarm, IR alarm, Tamper, Anti Masking, Disqualification, RS485.
- 230Vac Power supply unit inside the column.
- Operating temperature -25° ÷ +65°
- Optional wall mounting kit.
- Dimensions : L25cm—P 22cm—h. 1m ÷ 4m. Base  $\Phi$  30cm



### SMA OPTICS

The new SMA technology (Single Man Alignment) allows the optical alignment thanks to efficient LED visible at 200m and buzzer for indicating the best signal without using other tools. This function is activated by pressing a button on each optic. RS485 output allows to manage through BUS and ADEBUS control panel the system by remote, keeping the classical relay outputs, with also the possibility of optical synchronization.

### ACCESSORIES

#### ADEBUS

Up to 32 column connectable.  
Software  
ADEBUS EXPLORER included



#### POB 30

Cable pit. It simplify the connection and installation with horizontal and vertical adjustment.



CODE	DESCRIPTION	TYPE OF PRODUCT
MANA DT SMA 15250 2X	Barrier composed with 1 couple of microwaves + 2TX e 2RX a dual optical beams H 150 cm. Supply 230V - -. Range max 250 m.	PAIR OF COLUMNS
MANA DT SMA 15250 3X	Barrier composed with 1 couple of microwaves + 3TX e 3RX a dual optical beams H 150 cm. Supply 230V - -. Range max 250 m.	PAIR OF COLUMNS
MANA DT SMA 20250 4X	Barrier composed with 1 couple of microwaves + 4TX e 4RX a dual optical beams H 200 cm. Supply 230V - -. Range max 250 m.	PAIR OF COLUMNS
MANA DT SMA 25250 4X	Barrier composed with 1 couple of microwaves + 4TX e 4RX a dual optical beams H 250 cm. Supply 230V - -. Range max 250 m.	PAIR OF COLUMNS
MANA DT SMA 30250 4X	Barrier composed with 1 couple of microwaves + 4TX e 4RX a dual optical beams H 300 cm. Supply 230V - -. Range max 250 m.	PAIR OF COLUMNS
ADEBUS	Monitoring control panel for digital systems connected with RS485.	CONTROL PANEL
ADEBUS ESP	Expansion module for ADEBUS with 16 output relay.	ACCESSORIES
ADEBUS S2	Expansion module for ADEBUS to have second serial RS485 line	ACCESSORIES
POB 30	Cable pit for Parvis and Mana columns	ACCESSORIES
MANA AC TOP	Anti climbing cap for MANA columns.	ACCESSORIES
MANA FOR	Base Mana reinforcement for columns exceeding 2 m. DX + SX - Black color.	ACCESSORIES
MANA SD	Wall bracket for MANA column (1 pz).	ACCESSORIES
MANA 3DT	Doppler 24 GhZ microwave sensor with adjustable range 1 ÷ 10m. To be inserted in MANA DT Column to cover the "dead zone".	ACCESSORIES

## MONITORING SYSTEM ADEBUS

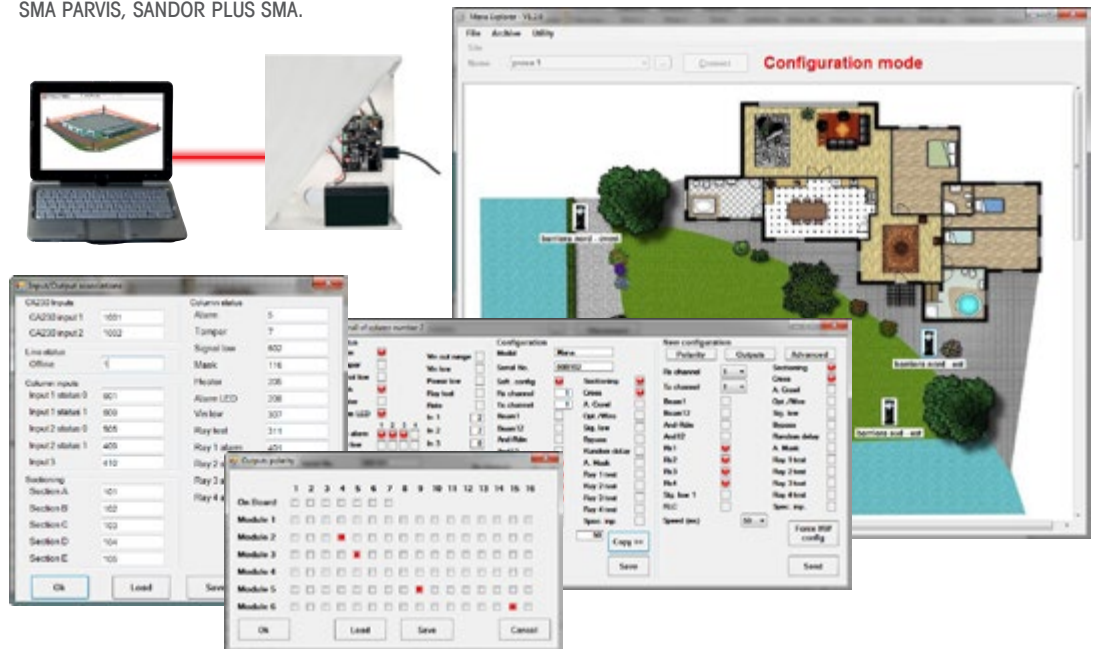
### CHARACTERISTICS

- Compatible with MANA SMA, PARVIS SMA, SANDOR PLUS SMA
- Up to 32 column IR or DT SMA—range max 250m.
- Serial BUS RS485 connection
- Management / programming / control/ adjustments via BUS
- Adebuss control unit with double BUS and TC/IP - WEB Server access
- Up to 6 optional relay cards to have 96 fully programmable outputs
- 7 master output on control panel
- Memory last 20.000 events with download facility.
- ZONING : analysis of the alarm with ability to detect up to 5 zones into the covered area
- Informations for: Alarm, Tamper, Environmental disqualification, Masking, heating active, low tension, RX status of every column.

### ACCESSORIES

#### SOFTWARE ADEBUS EXPLORER

Management software with information and programming for each column model MANA SMA, SMA PARVIS, SANDOR PLUS SMA.



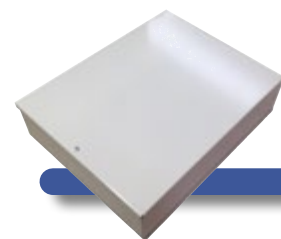
CODE	DESCRIPTION	TYPE OF PRODUCT
ADEBUS	Monitoring control panel for digital systems connected with RS485. In metal box with power supplier.	CONTROL PANEL
ADEBUS ESP	Expansion module for ADEBUS with 16 output relay. Max. 6 modules for ADEBUS	ACCESSORIES
ADEBUS S2	Expansion module for ADEBUS to have second serial RS485 line	ACCESSORIES



## LAR 22 S

### CHARACTERISTICS

- Power supplier in metal box
- 2 output 13,8Vdc—2.5A
- 2 output 24Vac—300VA
- Fuse 10A to protect 24Vac output
- Fuse 3A to protect 13,8Vdc output
- Fuse 3A to protect battery
- Primary 230Vac protected by fast fuse 250V/2A
- Place for battery 12V—17Ah MAX
- Protection degree : IP40
- In accordance to European norm :
  - Emission : EN 55022-B EN 610004-3-2
  - Immunity : EN 55024
    - EN 610004-2 EN 610004-3
    - EN 610004-4 EN 610004-5
    - EN 610004-6 EN 610004-8
    - EN 610004-11
  - Low tension: EN 60950
  - Alimentazione : S 61940
- Dimensions : l=300mm h=380mm p=90mm
- Weight: 4.5kg



## LAR 18

### CHARACTERISTICS

- Power supplier in waterproof box
- Nr. 1 Output 13,8Vdc—0,9 A
- Nr. 1 Output 24Vac—2,5 A
- Nr. 1 for battery charge



CODE	DESCRIPTION	TYPE OF PRODUCT
LAR 22S	Power supplier 13,8Vdc 2.5A - 24Vac300VA	ACCESSORIES
LAR 18	Power supplier - 12 Vdc 0,9A - 24 Vca 2,5A.	ACCESSORIES
LAR B 4	Battery 4Ah for LAR 18 in sealed container.	ACCESSORIES

## DOUBLE TECHNOLOGY PASSIVE CURTAIN SENSOR

### CHARACTERISTICS

- Protection grade: IP65
- Suggested installation height: 2÷3m.
- PIR and microwave range settable 1÷12m
- 24GHz supervised microwave in K-band
- Coverage angle IR = 80°V - 6°H ; MW = 85°V - 30°H
- Supply 10Vdc ÷ 30Vdc - consumption 42mA MAX
- LEDS excludable: Walk-test, IR, MW and Alarm.
- NC Outputs : Alarm, Tamper, Anti-masking (open collector)
- Function ANTIMASKING settable
- Function PET IMMUNITY
- Function SELF-DIAGNOSTIC (Automatic check every 50 sec)
- Automatic TEMPERATURE COMPENSATION (thermic probe included)
- Automatic ENVIROMENTAL COMPENSATION (rain)
- TRIPLE AUTOPROTECTION (opening, wall pulling and anti-masking)
- Fixing accessories for straight wall-mounting and L bracket included
- Operating temperature -25°C÷ +65°C
- Dimensions: 135x33x40mm

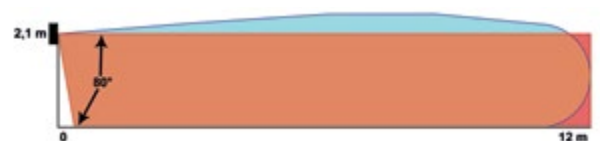
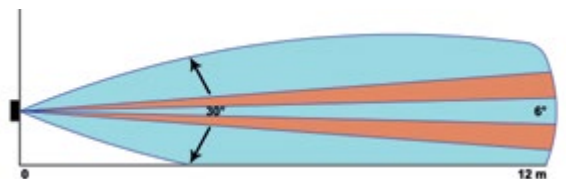


### ACCESSORIES

#### "L" MOUNTING BRACKET :



EVOLUTION & INNOVATION



## CHARACTERISTICS

- Multiplexed active infrared (LO = 950nm)
- ALES 60 – range 60 m - ALES 120 —range 120 m
- 4 signal modulation channels
- Alignment SMA
- Operating temperature -25° ÷ +65°
- Dual optical per beam
- Optical synchronization
- Adjustable reaction time 50 ÷ 500 mSec
- Fog disqualification with dedicated output
- Supply 10Vdc ÷ 30Vdc
- Outputs : Alarm, Tamper, Fog (low signal)
- Wall fixing and pole fixing bracket included
- Heating resistors 5W (option) with thermostat supplied 10Vdc ÷ 30Vdc – dim. 2x6x2cm
- Dimensions: L 7 cm — P 8 cm—h 18 cm
- Adjustable intervention time 50 ÷ 750 msec



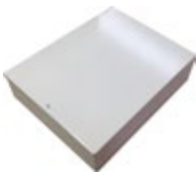
SMA OPTICS



## ACCESSORIES

### LAR 22 S

Power supplier  
12Vcc/ 2,5 A  
24 Vac/300W  
Place for battery  
12 V/17 Ah



### ALES TS

Kit heaters  
(5W/12Vcc) With thermostat  
Supply 10 ÷ 30Vcc  
**Cons. 125 mA**



CODE	DESCRIPTION	TYPE OF PRODUCT
<b>ALES 60</b>	Single beam Dual Optics barrier - 60 m range	PAIR OF COLUMNS
<b>ALES 120</b>	Single beam Dual Optics barrier - 120 m range	PAIR OF COLUMNS
<b>ALES TS</b>	Heaters with thermostat for Ales - 2pcs	ACCESSORIES
<b>LAR 22S</b>	Power supplier 13,8Vdc 2.5A - 24Vac300VA	ACCESSORIES





SMA OPTICS

### CHARACTERISTICS

- Multiplexed active infrared (LO = 950nm)
- Range 60 m
- 4 signal modulation channels
- Alignment SMA
- Operating temperature -25° ÷ +65°
- Dual optical per beam
- Optical synchronization
- Adjustable reaction time 50 ÷ 500 mSec
- Fog disqualification with dedicated output
- Supply 3,6 Vdc
- Outputs : Alarm, Tamper, Fog (low signal), Battery low
- Wall fixing and pole fixing bracket included
- Dimensions: L 7 cm — P 13 cm—h 18 cm
- Adjustable intervention time 50 ÷ 500 msec

### ACCESSORIES



#### SA/BK2



CODE	DESCRIPTION	TYPE OF PRODUCT
ALES WS	Single beam Dual Optics barrier - 60 m range - Battery operated	PAIR OF COLUMNS
SA/BK2	Battery 3.6V 1900mAh with connectors	ACCESSORIES

## ACTIVE INFRARED BARRIER FOR DOORS AND WINDOWS

### CHARACTERISTICS

- Multiplexed active infrared (LO = 950nm) range 15m MAX
- Operating temperature -25°C ÷ +65°C
- 4 ÷ 20 optics to obtain from 2 ÷ 10 parallel double beams.
- Wired synchronization.
- Mode OR (one interrupted double beam gives alarm) or AND (alarm given only if at least 2 double beams are interrupted)
- Outputs : Alarm, Tamper
- Optional heating kit : 1 Thermostat and from 2 up to 14 heating resistors.
- Supply 13,8Vdc
- Tampered rotating brackets to simplify the alignment.
- Anodized aluminium structure
- Dimensions : L25mm—P22mm—h. 0,6m ÷ 4m
- White colour available with reduced range (5m).
- Intervention time 50 or 250 msec

### ACCESSORIES

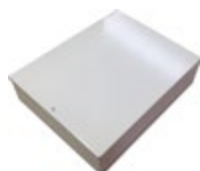
#### SADRIN SD

Nr. 4 Swivel bracket



#### LAR 22

Power supplier  
12Vcc/24Vac



#### SADRIN KIT TER

Kit thermostat  
and heaters



CODE	DESCRIPTION	TYPE OF PRODUCT
<b>SADRIN 205</b>	Height 50 cm 2 double beams 2TX + 2RX	PAIR OF COLUMNS
<b>SADRIN 210</b>	Height 100 cm 2 double beams 2TX + 2RX	PAIR OF COLUMNS
<b>SADRIN 310</b>	Height 100 cm 3 double beams 3TX + 3RX	PAIR OF COLUMNS
<b>SADRIN 410</b>	Height 100 cm 4 double beams 4TX + 4RX	PAIR OF COLUMNS
<b>SADRIN 415</b>	Height 150 cm 4 double beams 4TX + 4RX	PAIR OF COLUMNS
<b>SADRIN 420</b>	Height 200 cm 4 double beams 4TX + 4RX	PAIR OF COLUMNS
<b>SADRIN 425</b>	Height 250 cm 4 double beams 4TX + 4RX	PAIR OF COLUMNS
<b>SADRIN 430</b>	Height 300 cm 4 double beams 4TX + 4RX	PAIR OF COLUMNS
<b>SADRIN 615</b>	Height 150 cm 6 double beams 6TX + 6RX	PAIR OF COLUMNS
<b>SADRIN 620</b>	Height 200 cm 6 double beams 6TX + 6RX	PAIR OF COLUMNS
<b>SADRIN 625</b>	Height 250 cm 6 double beams 6TX + 6RX	PAIR OF COLUMNS
<b>SADRIN 630</b>	Height 300 cm 6 double beams 6TX + 6RX	PAIR OF COLUMNS
<b>SADRIN 820</b>	Height 200 cm 8 double beams 8TX + 8RX	PAIR OF COLUMNS
<b>SADRIN 825</b>	Height 250 cm 8 double beams 8TX + 8RX	PAIR OF COLUMNS
<b>SADRIN 830</b>	Height 300 cm 8 double beams 8TX + 8RX	PAIR OF COLUMNS
<b>SADRIN 835</b>	Height 350 cm 8 double beams 8TX + 8RX	PAIR OF COLUMNS
<b>SADRIN 1020</b>	Height 200 cm 10 double beams 10TX + 10RX	PAIR OF COLUMNS
<b>SADRIN 1025</b>	Height 250 cm 10 double beams 10TX + 10RX	PAIR OF COLUMNS
<b>SADRIN 1030</b>	Height 300 cm 10 double beams 10TX + 10RX	PAIR OF COLUMNS
<b>ESP TX+RX</b>	Expansion kit 1TX+1RX+cable 20cm	ACCESSORIES
<b>SADRIN SD</b>	kit of 4 pivoting brackets	ACCESSORIES
<b>LAR 22S</b>	Power supplier 13,8Vdc 2.5A - 24Vac300VA	ACCESSORIES

## SELF-POWERED ACTIVE INFRARED BARRIER FOR DOORS AND WINDOWS

### CHARACTERISTICS

- Multiplexed active infrared (LO = 950nm) range 10m MAX
- Operating temperature -25°C ÷ +65°C
- 4 ÷ 16 optics to obtain from 2 ÷ 8 parallel double beams
- Easy alignment thanks to SMA system and walk test.
- Optical synchronization.
- Mode OR (one interrupted double beam gives alarm) or AND (alarm given only if at least 2 double beams are interrupted)
- Supplied with Lithium battery 3,6Vdc
- Outputs : Alarm, Tamper, Supplying output.
- Power supply: WSI version with 4 lithium batteries 3.6V 2.7Ah; WSE version with 2 batteries 3.6V 19Ah
- Battery life WSE 3 years — WSI 1,5 years
- Tampered rotating brackets to simplify the alignment on distance greater than 5m. Only for WSI version.
- Anodized aluminium structure;
- Dimensions : L25mm—P22mm—h. 0,6m ÷ 4m
- White colour available with reduced range.
- Intervention time 150 or 250 msec

### ACCESSORIES

#### SAD/WSE

2 Boxes with  
Batt. 3,6 V 19Ah



#### SADRIN SD

Nr. 4 Swivel  
bracket



#### SA/BK2

Kit 2 batt.  
3,6V 19Ah



#### SA/BK

Kit 4 bat.  
3,6V 2,7Ah



#### SADRIN BH

Additional battery  
holder for WSI



CODE	DESCRIPTION	TYPE OF PRODUCT
<b>SADRIN WSI SMA 205</b>	Height 50 cm 2 beams	PAIR OF COLUMNS
<b>SADRIN WSI SMA 410</b>	Height 1 m 4 beams	PAIR OF COLUMNS
<b>SADRIN WSI SMA 415</b>	Height 1,5 m 4 beams	PAIR OF COLUMNS
<b>SADRIN WSI SMA 420</b>	Height 2m 4 beams	PAIR OF COLUMNS
<b>SADRIN WSI SMA 425</b>	Height 2,5m 4 beams	PAIR OF COLUMNS
<b>SADRIN WSI SMA 430</b>	Height 3 m 4 beams	PAIR OF COLUMNS
<b>SADRIN WSI SMA 615</b>	Height 1,5 m 6 beams	PAIR OF COLUMNS
<b>SADRIN WSI SMA 620</b>	Height 2 m 6 beams	PAIR OF COLUMNS
<b>SADRIN WSI SMA 820</b>	Height 2 m 8 beams	PAIR OF COLUMNS
<b>SADRIN WSI SMA 825</b>	Height 2,5 m 8 beams	PAIR OF COLUMNS
<b>SADRIN WSI SMA 830</b>	Height 3 m 8 beams	PAIR OF COLUMNS

<b>SADRIN WSE SMA 205</b>	Height 50 cm 2 beams	PAIR OF COLUMNS
<b>SADRIN WSE SMA 410</b>	Height 1 m 4 beams	PAIR OF COLUMNS
<b>SADRIN WSE SMA 415</b>	Height 1,5 m 4 beams	PAIR OF COLUMNS
<b>SADRIN WSE SMA 420</b>	Height 2m 4 beams	PAIR OF COLUMNS
<b>SADRIN WSE SMA 425</b>	Height 2,5m 4 beams	PAIR OF COLUMNS
<b>SADRIN WSE SMA 430</b>	Height 3 m 4 beams	PAIR OF COLUMNS
<b>SADRIN WSE SMA 615</b>	Height 1,5 m 6 beams	PAIR OF COLUMNS
<b>SADRIN WSE SMA 620</b>	Height 2 m 6 beams	PAIR OF COLUMNS
<b>SADRIN WSE SMA 820</b>	Height 2 m 8 beams	PAIR OF COLUMNS
<b>SADRIN WSE SMA 825</b>	Height 2,5 m 8 beams	PAIR OF COLUMNS
<b>SADRIN WSE SMA 830</b>	Height 3 m 8 beams	PAIR OF COLUMNS

<b>SA/BK</b>	Battery 3.6V 2700mAh	ACCESSORIES
<b>ESP WS Tx+Rx</b>	Expansion beams kit	ACCESSORIES
<b>KIT SAD/WSE</b>	Conversion kit WSE, without battery	ACCESSORIES
<b>SA/BK2</b>	Battery 3.6V 19000mAh with connectors	ACCESSORIES
<b>SADRIN BH</b>	Additional battery holder (2pcs)	ACCESSORIES
<b>SADRIN SD 2 N</b>	kit of 4 pivoting brackets Black	ACCESSORIES
<b>SADRIN SD 2 B</b>	kit of 4 pivoting brackets White	ACCESSORIES



## SELF POWERED ACTIVE INFRARED BARRIER

### CHARACTERISTICS

- Battery supplied 3,6V—19Ah
- Composed from 2 up to 6 double beams – MAX range 50 m.
- Alignment SMA.
- Low battery alert
- Fog disqualification
- Adjustable reaction time 50 ÷ 500 mSec
- Life of batteries 36÷72 months (6 ÷ 2 double beams)
- Tamper and low battery alert of TX column transmitted optically to RX column
- Outputs : Alarm, Tamper, Fog disqualification, Low battery
- Compatible with all Wireless systems
- Supplying output (3 o 3,6V) for wireless transmitter
- Operating temperature -25°÷ +65°
- Anodized aluminium structure;
- Wall or pole mounting
- Dimensions L 6cm—P 6cm—h. 50cm ÷ 100cm
- Anti crawl function



### SMA OPTICS

The new SMA technology (Single Man Alignment) allows the optical alignment thanks to efficient LED visible at 200m and buzzer for indicating the best signal without using other tools. This function is activated by pressing a button on each optic.

### ACCESSORIES

#### SAN/SD

Wall mounting  
bracket



#### SAN/PL

Pole mounting  
bracket



#### TB1 - TB2

Poles  $\Phi$  49mm  
1m - 2m



#### SA/BK2

Batteries  
3,6V 19Ah



CODE	DESCRIPTION	TYPE OF PRODUCT
<b>SANDOR SMA WS 205</b>	Barrier composed with 2TX e 2RX Dual optical beams, H 60 cm. Internal Battery Kit SA/BK2. Range max 50 m.	PAIR OF COLUMNS
<b>SANDOR SMA WS 210</b>	Barrier composed with 2TX e 2RX Dual optical beams, H 100 cm. Internal Battery Kit SA/BK2. Range max 50 m.	PAIR OF COLUMNS
<b>SANDOR SMA WS 215</b>	Barrier composed with 2TX e 2RX Dual optical beams, H 150 cm. Internal Battery Kit SA/BK2. Range max 50 m.	PAIR OF COLUMNS
<b>SANDOR SMA WS 220</b>	Barrier composed with 2TX e 2RX Dual optical beams, H 200 cm. Internal Battery Kit SA/BK2. Range max 50 m.	PAIR OF COLUMNS
<b>SANDOR SMA WS 310</b>	Barrier composed with 3TX e 3RX Dual optical beams, H 100 cm. Internal Battery Kit SA/BK2. Range max 50 m.	PAIR OF COLUMNS
<b>SANDOR SMA WS 315</b>	Barrier composed with 3TX e 3RX Dual optical beams, H 150 cm. Internal Battery Kit SA/BK2. Range max 50 m.	PAIR OF COLUMNS
<b>SANDOR SMA WS 320</b>	Barrier composed with 3TX e 3RX Dual optical beams, H 200 cm. Internal Battery Kit SA/BK2. Range max 50 m.	PAIR OF COLUMNS
<b>SANDOR SMA WS 410</b>	Barrier composed with 4TX e 4RX Dual optical beams, H 100 cm. Internal Battery Kit SA/BK2. Range max 50 m.	PAIR OF COLUMNS
<b>SANDOR SMA WS 415</b>	Barrier composed with 4TX e 4RX Dual optical beams, H 150 cm. Internal Battery Kit SA/BK2. Range max 50 m.	PAIR OF COLUMNS
<b>SANDOR SMA WS 420</b>	Barrier composed with 4TX e 4RX Dual optical beams, H 200 cm. Internal Battery Kit SA/BK2. Range max 50 m.	PAIR OF COLUMNS
<b>SANDOR SMA WS 425</b>	Barrier composed with 4TX e 4RX Dual optical beams, H 250 cm. Internal Battery Kit SA/BK2. Range max 50 m.	PAIR OF COLUMNS
<b>SANDOR SMA WS 515</b>	Barrier composed with 5TX e 5RX Dual optical beams, H 150 cm. Internal Battery Kit SA/BK2. Range max 50 m.	PAIR OF COLUMNS
<b>SANDOR SMA WS 520</b>	Barrier composed with 5TX e 5RX Dual optical beams, H 200 cm. Internal Battery Kit SA/BK2. Range max 50 m.	PAIR OF COLUMNS
<b>SANDOR SMA WS 525</b>	Barrier composed with 5TX e 5RX Dual optical beams, H 250 cm. Internal Battery Kit SA/BK2. Range max 50 m.	PAIR OF COLUMNS
<b>SANDOR SMA WS 615</b>	Barrier composed with 6TX e 6RX Dual optical beams, H 150 cm. Internal Battery Kit SA/BK2. Range max 50 m.	PAIR OF COLUMNS
<b>SANDOR SMA WS 620</b>	Barrier composed with 6TX e 6RX Dual optical beams, H 200 cm. Internal Battery Kit SA/BK2. Range max 50 m.	PAIR OF COLUMNS
<b>SANDOR SMA WS 625</b>	Barrier composed with 6TX e 6RX Dual optical beams, H 250 cm. Internal Battery Kit SA/BK2. Range max 50 m.	PAIR OF COLUMNS
<b>SAN/PL</b>	Pole / wall mounting kit	ACCESSORIES
<b>SAN/SD</b>	Wall mounting kit for one barrier (2pcs)	ACCESSORIES
<b>SAN/TB1</b>	Zincated pole H 1 m – Dia 49 mm.	ACCESSORIES
<b>SAN/TB2</b>	Zincated pole H 2 m – Dia 49 mm.	ACCESSORIES
<b>SA/BK2</b>	Battery 3.6V 19000mAh with connectors - (2 pcs)	ACCESSORIES

## ACTIVE INFRARED BARRIER POWERED WITH 230V

### CHARACTERISTICS

- Power supply 230Vac + rechargeable battery 3,6V 1800 mAh
- Composed from 2 up to 6 double beams – MAX range 50 m.
- Alignment SMA.
- Low battery alert
- Fog disqualification
- Adjustable reaction time 50 ÷ 500 mSec
- Battery life in absence of 230Vac - 3 months
- Tamper and low battery alert of TX column transmitted optically to RX column
- Outputs : Alarm, Tamper, Fog disqualification, Low battery
- Compatible with all Wireless systems
- Output (3 o 3,6V) for wireless transmitter supply
- Operating temperature -25° ÷ +65°
- Anodized aluminium structure;
- Wall or pole mounting
- Dimensions L 6cm—P 6cm—h. 50cm ÷ 100cm
- Anti crawl function



### SMA OPTICS

The new SMA technology (Single Man Alignment) allows the optical alignment thanks to efficient LED visible at 200m and buzzer for indicating the best signal without using other tools. This function is activated by pressing a button on each optic.

### ACCESSORIES

#### SAN/SD

Wall mounting  
bracket



#### SAN/PL

Pole mounting  
bracket



#### TB1 - TB2

Poles  $\Phi$  49mm  
1m - 2m



#### BAT SAN HY

Rechargeable battery  
3,6V 1800mAh



CODE	DESCRIPTION	TYPE OF PRODUCT
<b>SANDOR SMA HY 210</b>	Barrier composed with 2TX e 2RX a dual optical beams, H 100 cm. -Supply 230V + rechargeable battery inside. Range max 100 m.	PAIR OF COLUMNS
<b>SANDOR SMA HY 215</b>	Barrier composed with 2TX e 2RX a dual optical beams, H 150 cm. -Supply 230V + rechargeable battery inside. Range max 100 m.	PAIR OF COLUMNS
<b>SANDOR SMA HY 310</b>	Barrier composed with 3TX e 3RX a dual optical beams, H 100 cm. -Supply 230V + rechargeable battery inside. Range max 100 m.	PAIR OF COLUMNS
<b>SANDOR SMA HY 315</b>	Barrier composed with 3TX e 3RX a dual optical beams, H 150 cm. -Supply 230V + rechargeable battery inside. Range max 100 m.	PAIR OF COLUMNS
<b>SANDOR SMA HY 320</b>	Barrier composed with 3TX e 3RX a dual optical beams, H 200 cm. -Supply 230V + rechargeable battery inside. Range max 100 m.	PAIR OF COLUMNS
<b>SANDOR SMA HY 325</b>	Barrier composed with 3TX e 3RX a dual optical beams, H 250 cm. -Supply 230V + rechargeable battery inside. Range max 100 m.	PAIR OF COLUMNS
<b>SANDOR SMA HY 410</b>	Barrier composed with 4TX e 4RX a dual optical beams, H 100 cm. -Supply 230V + rechargeable battery inside. Range max 100 m.	PAIR OF COLUMNS
<b>SANDOR SMA HY 415</b>	Barrier composed with 4TX e 4RX a dual optical beams, H 150 cm. -Supply 230V + rechargeable battery inside. Range max 100 m.	PAIR OF COLUMNS
<b>SANDOR SMA HY 420</b>	Barrier composed with 4TX e 4RX a dual optical beams, H 200 cm. -Supply 230V + rechargeable battery inside. Range max 100 m.	PAIR OF COLUMNS
<b>SANDOR SMA HY 425</b>	Barrier composed with 4TX e 4RX a dual optical beams, H 250 cm. -Supply 230V + rechargeable battery inside. Range max 100 m.	PAIR OF COLUMNS
<b>SANDOR SMA HY 515</b>	Barrier composed with 5TX e 5RX a dual optical beams, H 150 cm. -Supply 230V + rechargeable battery inside. Range max 100 m.	PAIR OF COLUMNS
<b>SANDOR SMA HY 520</b>	Barrier composed with 5TX e 5RX a dual optical beams, H 200 cm. -Supply 230V + rechargeable battery inside. Range max 100 m.	PAIR OF COLUMNS
<b>SANDOR SMA HY 525</b>	Barrier composed with 5TX e 5RX a dual optical beams, H 250 cm. -Supply 230V + rechargeable battery inside. Range max 100 m.	PAIR OF COLUMNS
<b>SANDOR SMA HY 615</b>	Barrier composed with 6TX e 6RX a dual optical beams, H 150 cm. -Supply 230V + rechargeable battery inside. Range max 100 m.	PAIR OF COLUMNS
<b>SANDOR SMA HY 620</b>	Barrier composed with 6TX e 6RX a dual optical beams, H 200 cm. -Supply 230V + rechargeable battery inside. Range max 100 m.	PAIR OF COLUMNS
<b>SANDOR SMA HY 625</b>	Barrier composed with 6TX e 6RX a dual optical beams, H 250 cm. -Supply 230V + rechargeable battery inside. Range max 100 m.	PAIR OF COLUMNS
<b>SAN/PL</b>	Pole / wall mounting kit	ACCESSORIES
<b>SAN/SD</b>	Wall mounting kit for one barrier (2pcs)	ACCESSORIES
<b>SAN/TB1</b>	Zincated pole H 1 m – Dia 49 mm.	ACCESSORIES
<b>SAN/TB2</b>	Zincated pole H 2 m – Dia 49 mm.	ACCESSORIES
<b>BATT SAN HY 1.8Ah</b>	Battery 3.6V 1800Ah	ACCESSORIES



## ACTIVE INFRARED BARRIER POWERED WITH SOLAR CELLS

### CARATTERISTICHE

- Power supply Solar cells + rechargeable battery 3,6V 1800 mAh
- Composed from 2 up to 6 double beams – MAX range 50 m.
- Alignment SMA.
- Low battery alert
- Fog disqualification
- Adjustable reaction time 50 ÷ 500 mSec
- Battery life in absence of recharge—3 months
- Tamper and low battery alert of TX column transmitted optically to RX column
- Outputs : Alarm, Tamper, Fog disqualification, Low battery
- Compatible with all Wireless systems
- Output (3 o 3,6V) for wireless transmitter supply
- Operating temperature -25° ÷ +65°
- Anodized aluminium structure;
- Wall or pole mounting
- Dimensions L 6cm—P 6cm—h. 50cm ÷ 100cm



### OTTICHE SMA

The new SMA technology (Single Man Alignment) allows the optical alignment thanks to efficient LED visible at 200m and buzzer for indicating the best signal without using other tools. This function is activated by pressing a button on each optic.

### ACCESSORI

#### SAN/SD

Wall mounting bracket



#### SAN/PL

Pole mounting bracket



#### TB1 - TB2

Poles  $\Phi$  49mm  
1m - 2m



#### BAT SAN HY

Rechargeable battery  
3,6V 1800mAh



CODE	DESCRIPTION	TYPE OF PRODUCT
<b>SANDOR SMA SL 210</b>	Barrier composed with 2TX e 2RX a dual optical beams, H 100 cm. Solar cells+ rechargeable battery inside. Range max 100 m.	PAIR OF COLUMNS
<b>SANDOR SMA SL 215</b>	Barrier composed with 2TX e 2RX a dual optical beams, H 150 cm. Solar cells + rechargeable battery inside. Range max 100 m.	PAIR OF COLUMNS
<b>SANDOR SMA SL 310</b>	Barrier composed with 3TX e 3RX a dual optical beams, H 100 cm. Solar cells + rechargeable battery inside. Range max 100 m.	PAIR OF COLUMNS
<b>SANDOR SMA SL 315</b>	Barrier composed with 3TX e 3RX a dual optical beams, H 150 cm. Solar cells + rechargeable battery inside. Range max 100 m.	PAIR OF COLUMNS
<b>SANDOR SMA SL 320</b>	Barrier composed with 3TX e 3RX a dual optical beams, H 200 cm. Solar cells + rechargeable battery inside. Range max 100 m.	PAIR OF COLUMNS
<b>SANDOR SMA SL 325</b>	Barrier composed with 3TX e 3RX a dual optical beams, H 250 cm. Solar cells + rechargeable battery inside. Range max 100 m.	PAIR OF COLUMNS
<b>SANDOR SMA SL 410</b>	Barrier composed with 4TX e 4RX a dual optical beams, H 100 cm. Solar cells + rechargeable battery inside. Range max 100 m.	PAIR OF COLUMNS
<b>SANDOR SMA SL 415</b>	Barrier composed with 4TX e 4RX a dual optical beams, H 150 cm. Solar cells + rechargeable battery inside. Range max 100 m.	PAIR OF COLUMNS
<b>SANDOR SMA SL 420</b>	Barrier composed with 4TX e 4RX a dual optical beams, H 200 cm. Solar cells + rechargeable battery inside. Range max 100 m.	PAIR OF COLUMNS
<b>SANDOR SMA SL 425</b>	Barrier composed with 4TX e 4RX a dual optical beams, H 250 cm. Solar cells + rechargeable battery inside. Range max 100 m.	PAIR OF COLUMNS
<b>SANDOR SMA SL 515</b>	Barrier composed with 5TX e 5RX a dual optical beams, H 150 cm. Solar cells + rechargeable battery inside. Range max 100 m.	PAIR OF COLUMNS
<b>SANDOR SMA SL 520</b>	Barrier composed with 5TX e 5RX a dual optical beams, H 200 cm. Solar cells + rechargeable battery inside. Range max 100 m.	PAIR OF COLUMNS
<b>SANDOR SMA SL 525</b>	Barrier composed with 5TX e 5RX a dual optical beams, H 250 cm. Solar cells + rechargeable battery inside. Range max 100 m.	PAIR OF COLUMNS
<b>SANDOR SMA SL 615</b>	Barrier composed with 6TX e 6RX a dual optical beams, H 150 cm. Solar cells + rechargeable battery inside. Range max 100 m.	PAIR OF COLUMNS
<b>SANDOR SMA SL 620</b>	Barrier composed with 6TX e 6RX a dual optical beams, H 200 cm. Solar cells + rechargeable battery inside. Range max 100 m.	PAIR OF COLUMNS
<b>SANDOR SMA SL 625</b>	Barrier composed with 6TX e 6RX a dual optical beams, H 250 cm. Solar cells + rechargeable battery inside. Range max 100 m.	PAIR OF COLUMNS
<b>SAN/PL</b>	Pole / wall mounting kit	ACCESSORIES
<b>SAN/SD</b>	Wall mounting kit for one barrier (2pcs)	ACCESSORIES
<b>SAN/TB1</b>	Zincated pole H 1 m – Dia 49 mm.	ACCESSORIES
<b>SAN/TB2</b>	Zincated pole H 2 m – Dia 49 mm.	ACCESSORIES
<b>BATT SAN HY 1.8Ah</b>	Battery 3.6V 1800Ah	ACCESSORIES

## SELF POWERED ACTIVE INFRARED COLUMN

### CHARACTERISTICS

- Battery supplied 3,6V—19Ah
- 2 ÷ 6 dual beams 3TX & 3RX — range 50 m.
- Alignment SMA.
- Low battery alert
- Fog disqualification
- Adjustable reaction time 50 ÷ 500 mSec
- Life of batteries 36÷72 months (6 ÷ 2 double beams)
- Tamper and low battery alert of TX column transmitted optically to RX column
- Outputs : Alarm, Tamper, Fog disqualification, Low battery
- Compatible with all Wireless systems
- Only TX or only RX column available
- Output (3 o 3,6V) for wireless transmitter supply
- Operating temperature -25°÷ +65°
- Anodized aluminium structure;
- Dimensions:  $\Phi$  8cm—h. 1,2m ÷ 3m
- Anti crawl function



### SMA OPTICS

The new SMA technology (Single Man Alignment) allows the optical alignment thanks to efficient LED visible at 200m and buzzer for indicating the best signal without using other tools. This function is activated by pressing a button on each optic.

### ACCESSORIES

#### SA/BK2

Batteries  
3,6V 19Ah



#### POB 30

Cable pit



#### LAMP 30

Globe with lamp  
support



CODE	DESCRIPTION	TYPE OF PRODUCT
PARVIS SMA WS 412	Column composed with 4 dual optical beams 2TX + 2RX H 120 cm. Internal Battery Kit SA/BK2. Range max 50 m.	SINGLE COLUMN
PARVIS SMA WS 416	Column composed with 4 dual optical beams 2TX + 2RX H 160 cm. Internal Battery Kit SA/BK2. Range max 50 m.	SINGLE COLUMN
PARVIS SMA WS 420	Column composed with 4 dual optical beams 2TX + 2RX H 200 cm. Internal Battery Kit SA/BK2. Range max 50 m.	SINGLE COLUMN
PARVIS SMA WS 620	Column composed with 6 dual optical beams 3TX + 3RX H 200 cm. Internal Battery Kit SA/BK2. Range max 50 m.	SINGLE COLUMN
PARVIS SMA WS 625	Column composed with 6 dual optical beams 3TX + 3RX H 250 cm. Internal Battery Kit SA/BK2. Range max 50 m.	SINGLE COLUMN
PARVIS SMA WS 212 R / PARVIS SMA WS 212 T	Column with 2 dual optical beams RX o TX H 120 cm. - Internal Battery Kit SA/BK2. Range max 50 m.	SINGLE COLUMN
PARVIS SMA WS 216 R / PARVIS SMA WS 216 T	Column with 2 dual optical beams RX o TX H 160 cm. - Internal Battery Kit SA/BK2. Range max 50 m.	SINGLE COLUMN
PARVIS SMA WS 220 R / PARVIS SMA WS 220 T	Column with 2 dual optical beams RX o TX H 200 cm. - Internal Battery Kit SA/BK2. Range max 50 m.	SINGLE COLUMN
PARVIS SMA WS 320 R / PARVIS SMA WS 320 T	Column with 3 dual optical beams RX o TX H 200 cm. - Internal Battery Kit SA/BK2. Range max 50 m.	SINGLE COLUMN
PARVIS SMA WS 325 R / PARVIS SMA WS 325 T	Column with 3 dual optical beams RX o TX H 250 cm. - Internal Battery Kit SA/BK2. Range max 50 m.	SINGLE COLUMN
SA/BK2	Battery 3.6V 19000mAh with connectors - (2 pcs)	ACCESSORIES
POB 30	Cable pit for Parvis and Mana columns	ACCESSORIES
LAMP 30	Lamp bowl 30cm Diameter	ACCESSORIES

## ACTIVE INFRARED COLUMN POWERED WITH 230V

### CHARACTERISTICS

- Power supply 230Vac + rechargeable battery 3,6V 1800 mAh
- Composed from 2 up to 8 double beams (4TX + 4RX— MAX range 50 m.
- Alignment SMA.
- Low battery alert
- Fog disqualification
- Adjustable reaction time 50 ÷ 500 mSec
- Battery life in absence of 230Vac—3 months
- Outputs : Alarm, Tamper, Fog disqualification, Low battery
- Compatible with all Wireless systems
- Output (3 o 3,6V) for wireless transmitter supply
- Only TX or only RX column available (max. 4 optics)
- Operating temperature -25°÷ +65°
- Anodized aluminium structure;
- Dimensions:  $\Phi$  8cm—h. 1,2m ÷ 3m
- Anti crawl function



### SMA OPTICS

The new SMA technology (Single Man Alignment) allows the optical alignment thanks to efficient LED visible at 200m and buzzer for indicating the best signal without using other tools. This function is activated by pressing a button on each optic.

### ACCESSORIES

#### BAT SAN HY

Rechargeable battery  
3,6V 1800mAh



#### POB 30

Cable pit



#### LAMP 30

Globe with lamp  
support



CODE	DESCRIPTION	TYPE OF PRODUCT
PARVIS SMA HY 412	Column composed with 4 dual optica beams 2TX + 2RX H 120 cm. -Supply 230V + rechargeable battery inside. Range max 100 m.	SINGLE COLUMN
PARVIS SMA HY 416	Column composed with 4 dual optica beams 2TX + 2RX H 160 cm. -Supply 230V + rechargeable battery inside. Range max 100 m.	SINGLE COLUMN
PARVIS SMA HY 420	Column composed with 4 dual optica beams 2TX + 2RX H 200 cm. -Supply 230V + rechargeable battery inside. Range max 100 m.	SINGLE COLUMN
PARVIS SMA HY 620	Column composed with 6 dual optica beams 3TX + 3RX H 200 cm. -Supply 230V + rechargeable battery inside. Range max 100 m.	SINGLE COLUMN
PARVIS SMA HY 625	Column composed with 6 dual optica beams 3TX + 3RX H 250 cm. -Supply 230V + rechargeable battery inside. Range max 100 m.	SINGLE COLUMN
PARVIS SMA HY 212 R / PARVIS SMA HY 212 T	Column composed with 2 dual optics beams RX o TX H 120 cm. -Supply a 230 V + rechargeable battery inside. Range max 100 m.	SINGLE COLUMN
PARVIS SMA HY 216 R / PARVIS SMA HY 216 T	Colonna composta da 2 raggi doppia ottica RX o TX H 160 cm. Alimentazione a 230 V +batterie ricaricabili incluse. portata 100m.	COLONNA TERMINALE
PARVIS SMA HY 220 R / PARVIS SMA HY 220 T	Colonna composta da 2 raggi doppia ottica RX o TX H 200 cm. Alimentazione a 230 V +batterie ricaricabili incluse. portata 100m.	COLONNA TERMINALE
PARVIS SMA HY 320 R / PARVIS SMA HY 320 T	Colonna composta da 3 raggi doppia ottica RX o TX H 200 cm. Alimentazione a 230 V +batterie ricaricabili incluse. portata 100m.	COLONNA TERMINALE
PARVIS SMA HY 325 R / PARVIS SMA HY 325 T	Colonna composta da 3 raggi doppia ottica RX o TX H 250 cm. Alimentazione a 230 V +batterie ricaricabili incluse. portata 100m.	COLONNA TERMINALE
POB 30	Cable pit for Parvis and Mana columns	ACCESSORIES
LAMP 30	Lamp bowl 30cm Diameter	ACCESSORIES
BATT SAN HY 1.8Ah	Battery 3.6V 1800Ah for HYBRID & SOLAR barriers	ACCESSORIES



## ACTIVE INFRARED COLUMN POWERED WITH SOLAR CELLS

### CARATTERISTICHE

- Power supply solar cells + rechargeable battery 3,6V 1800 mAh
- Composed from 2 up to 8 double beams (4TX + 4RX- MAX range 50 m.
- Alignment SMA.
- Low battery alert
- Fog disqualification
- Adjustable reaction time 50 ÷ 500 mSec
- Battery life in absence recharge —3 months
- Outputs : Alarm, Tamper, Fog disqualification, Low battery
- Compatible with all Wireless systems
- Output (3 o 3,6V) for wireless transmitter supply
- Only TX or only RX column available (max. 4 optics)
- Operating temperature -25° ÷ +65°
- Anodized aluminium structure;
- Dimensions:  $\Phi$  8cm—h. 1,2m ÷ 3m



### OTTICHE SMA

The new SMA technology (Single Man Alignment) allows the optical alignment thanks to efficient LED visible at 200m and buzzer for indicating the best signal without using other tools. This function is activated by pressing a button on each optic.

### ACCESSORI

#### BAT SAN HY

Rechargeable battery  
3,6V 1800mAh



#### POB 30

Cable pit



#### LAMP 30

Globe with lamp  
support



CODE	DESCRIPTION	TYPE OF PRODUCT
PARVIS SMA SL 412	Column composed with 4 dual optica beams 2TX + 2RX H 120 cm. Solar cells + rechargeable battery inside. Range max 100 m.	SINGLE COLUMN
PARVIS SMA SL 416	Column composed with 4 dual optica beams 2TX + 2RX H 160 cm. Solar cells + rechargeable battery inside. Range max 100 m.	SINGLE COLUMN
PARVIS SMA SL 420	Column composed with 4 dual optica beams 2TX + 2RX H 200 cm. Solar cells + rechargeable battery inside. Range max 100 m.	SINGLE COLUMN
PARVIS SMA SL 620	Column composed with 6 dual optica beams 3TX + 3RX H 200 cm. Solar cells + rechargeable battery inside. Range max 100 m.	SINGLE COLUMN
PARVIS SMA SL 625	Column composed with 6 dual optica beams 3TX + 3RX H 250 cm. Solar cells + rechargeable battery inside. Range max 100 m.	SINGLE COLUMN
PARVIS SMA SL 212 R / PARVIS SMA SL 212 T	Column composed with 2 dual optica beams RX o TX H 120 cm. Solar cells+ rechargeable battery inside. Range max 100 m.	SINGLE COLUMN
PARVIS SMA SL 216 R / PARVIS SMA SL 216 T	Column composed with 2 dual optica beams RX o TX H 160 cm. Solar cells+ rechargeable battery inside. Range max 100 m.	SINGLE COLUMN
PARVIS SMA SL 220 R / PARVIS SMA SL 220 T	Column composed with 2 dual optica beams RX o TX H 200 cm. Solar cells+ rechargeable battery inside. Range max 100 m.	SINGLE COLUMN
PARVIS SMA SL 320 R / PARVIS SMA SL 320 T	Column composed with 3 dual optica beams RX o TX H 200 cm. Solar cells+ rechargeable battery inside. Range max 100 m.	SINGLE COLUMN
PARVIS SMA SL 325 R / PARVIS SMA SL 325 T	Column composed with 3 dual optica beams RX o TX H 250 cm. Solar cells+ rechargeable battery inside. Range max 100 m.	SINGLE COLUMN
POB 30	Cable pit for Parvis and Mana columns	ACCESSORIES
LAMP 30	Lamp bowl 30cm Diameter	ACCESSORIES
BATT SAN HY 1.8Ah	Battery 3.6V 1800Ah for HYBRID & SOLAR barriers	ACCESSORIES





 **POLITEC** s.r.l.  
Perimeter protection

Via Adda 66/68 - 20882 BELLUSCO (MB) - Italy  
tel. +39.039.6883019 - fax +39.039.6200471  
[www.politecsrl.it](http://www.politecsrl.it) - [info@politecsrl.it](mailto:info@politecsrl.it)

