

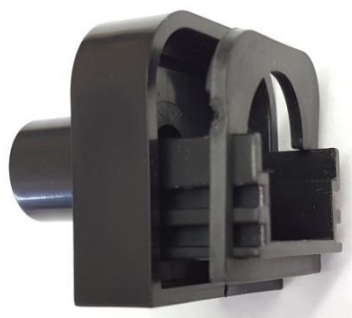
SADRIN SD2



N°	QUANTITY	DESCRIPTION
1	2	Above fixing bracket
2	2	Bottom fixing bracket
3	2	Above cap
4	2	Bottom cap
5	4	Insert
6	4	Plastic sheath for insert
7	4	Fixing grain
8	4	Screw for closing
9	2	Tamper

ASSEMBLING

1. Plug the sheath (6) in the insert (5).



2. Insert Tamper (9) in hook of fixing bracket.

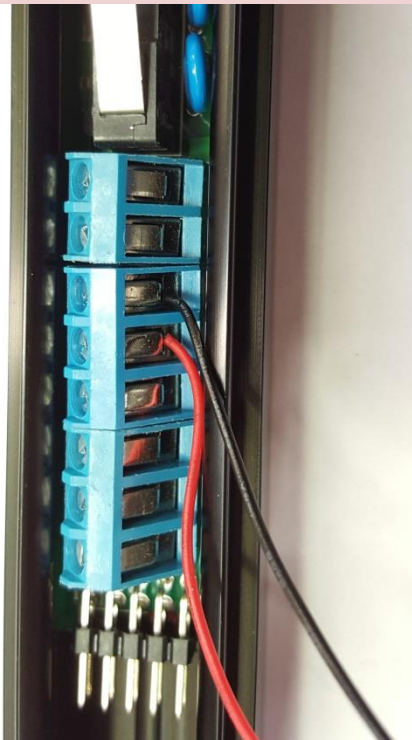


3. Connect the tamper cable in the motherboard by passing it thru the bracket and insert holes.



SADRIN

Cut connector away and connect the cables in the motherboard terminals.

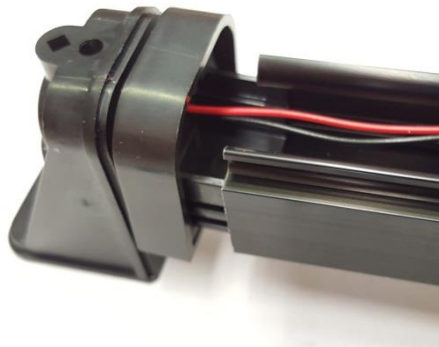


SADRIN WSI

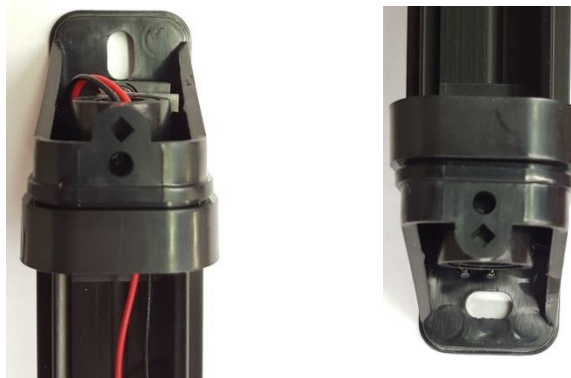
Insert the tamper into the TMP connector on the top of the motherboard.



4. Plug the inserts (5) into the aluminum profile.



5. Fix the barrier onto the wall using the slots on fixing brackets (1)-(2).



6. Screw the grains (7) in fixing brackets (1)-(2).



7. Align the barriers.

8. Block the horizontal rotation of the barriers screwing the grains (7) to flush the plastic surface of the fixing brackets (1)-(2).



9. Insert the plastic profile in the above insert.



10. Lever the plastic profile and insert it in bottom insert.



11. Press plastic profile over the entire height into the aluminum profile hook.

12. It is possible to cut the apposite groove on the bottom cap (4) to facilitate water runoff.



13. Close the caps (3)-(4) with screws (8)

