

ATS1201E

8 - 32 zone DGP, EN50131:2009 Grade 3 with 3 A Power Supply and Siren Driver

Product overview

The ATS1201E and ATS1204E expanders offer 8 standard inputs, 8 Open Collectors (OC) outputs and a siren driver. The expander can be extended to a total of 32 inputs and 32 outputs. It has a built-in 3 A switched mode power supply.

Expanders

Expanders are used to expand the number of alarm inputs in an Advisor Advanced system. Expanders allow inputs and outputs/relays to be connected at a location remote from an Advisor Advanced panel. Expanders communicate via poll & reply messages. Detectors, door contacts and other detection devices are connected to expanders that report any change of state to the control panel for processing. Available expanders include support for conventional devices, wireless devices as well as intelligent addressable devices. A special expander is available providing expansion of four to eight intelligent doors or lifts.

System databus connection

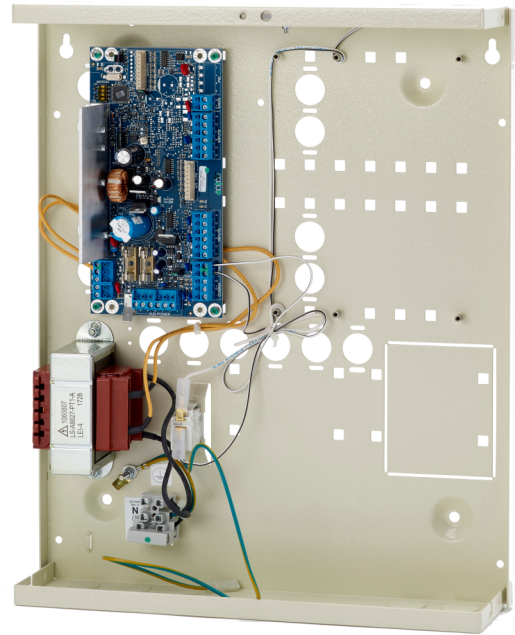
The system databus is used to connect expanders as well as keypads and readers (RASs) to the Advisor Advanced control panel. Remote devices can be up to 1.5 km from a control panels when using the preferred wiring and cable types. Keypads, readers and expanders have to be connected via a 2 pair twisted and shielded data cable to the system databus connection to achieve this. (WCAT52 is recommended). Daisy chain is the preferred wiring method. The shield of the data cable should be connected to earth at the control panel and should be left disconnected at any other end.

Functionality

Expanders provide information from remote locations to Advisor Advanced control panels in structured records. Data collected ranges from a wired input state to wireless or addressable device dates to a door state.

Bus devices communicate with the control panel. If a failure in communication occurs, the expander remembers the last alarm in a system preventing loss of an alarm due to a short interruption in data communication.

Up to 15 or 30 expanders can be connected to an Advisor Advanced depending on the variant.



Details

- 8 inputs on board
- Expandable to 32 inputs
- 8 Open Collector outputs on board
- Expandable to 32 OC outputs/relays with optional cards
- 1 siren output
- Switched mode power supply

ATS1201E

8 - 32 zone DGP, EN50131:2009 Grade 3 with 3 A Power Supply and Siren Driver

Technische specificaties

General

Expander type	Input expander
Product line	Advisor Advanced, ATS Master
Connection type	Databus connection
Compatibility	Advisor Advanced, Advisor Master
Max. distance from panel	1.5 km
Max. per panel	15 / 30 (depending on panel type)
Specified cable	WCAT52 / WCAT54 or equivalent

System

Addressing	DIP Switches
End-of-line resistor	Selectable

Inputs

Total	32
Onboard	8
Expandable	24 (3x ATS1202)

Outputs

Total	32
Onboard	8
Expandable	24
Type of outputs	Open Collector
Relays	Via ATS1810 / ATS1811
Maximum number of outputs	32
Siren outputs	1

Backup

Battery type	Up to 18Ah
Dynamic battery testing	Yes

Electrical

Power supply type	230 VAC
Power supply value	230 VAC +10%, -15%, 50/60 Hz
Power consumption	2.9 A max. at 13.8 VDC
Current consumption	75 mA typical
Integrated power supply	Yes

Physical

Physical dimensions	315 x 388 x 85 mm
Net weight	5.4 kg
Material	Steel (painted)
Housing	Medium Metal

Environmental

Operating temperature	-10 to +55°C
Relative humidity	95% noncondensing
Environment	EN50130-5 ; Class II - Indoor (General)
IP rating	IP30

Standards & regulation

Compliance	CE
Certification	CE



Als een bedrijf van innovatie behoudt Carrier Fire & Security zich het recht voor productspecificaties zonder kennisgeving te wijzigen. Ga voor de nieuwste productspecificaties online naar be.firesecurityproducts.com of neem contact op met uw verkoopvertegenwoordiger.

Last updated on 7 December 2021 - 13:42