

WIRELESS FLOOD DETECTOR



RISCO
GROUP

Creating Security Solutions
With Care.

riscogroup.com

United Kingdom
Tel: +44-161-655-5500
technical@riscogroup.co.uk

Italy
Tel: +39-02-665-90054
support@riscogroup.it

Spain
Tel: +34-91-490-2133
support-es@riscogroup.com

France
Tel: +33-164-73-28-50
support-fr@riscogroup.com

Belgium
Tel: +32-2522-7622
support-be@riscogroup.com

USA
Tel: +305-592-3820
support@riscogroupusa.com

Brazil
Tel: +55-11-3661-8767
support-br@riscogroup.com

China
Tel: +86-21-52-39-0066
support-cn@riscogroup.com

Poland
Tel: +48-22-500-28-40
support-pl@riscogroup.com

Israel
Tel: +972-3-963-7777
support@riscogroup.com

RISCO Group LIMITED WARRANTY

RISCO Group and its subsidiaries and affiliates ("Seller") warrants its products to be free from defects in materials and workmanship under normal use for 24 months from the date of production. Because Seller does not install or connect the product and because the product may be used in conjunction with products not manufactured by the Seller, Seller can not guarantee the performance of the security system which uses this product. Seller's obligation and liability under this warranty is expressly limited to repairing and replacing at Seller's option, within a reasonable time after the date of delivery, any product not meeting the specifications. Seller makes no other warranty, expressed or implied, and makes no warranty of merchantability or of fitness for any particular purpose. In no case shall seller be liable for any consequential or incidental damages for breach of this or any other warranty, expressed or implied, or upon any other basis of liability whatsoever. Seller's obligation under this warranty shall not include any transportation charges or costs of installation or any liability for direct, indirect, or consequential damages or delay Seller does not represent that its product may not be compromised or circumvented; that the product will prevent any personal; injury or property loss by burglary, robbery, fire or otherwise; or that the product will in all cases provide adequate warning or protection. Buyer understands that a properly installed and maintained alarm may only reduce the risk of burglary, robbery or fire without warning, but is not insurance or a guaranty that such will not occur or that there will be no personal injury or property loss as a result. Consequently seller shall have no liability for any personal injury, property damage or loss based on a claim that the product fails to give warning. However, if seller is held liable, whether directly or indirectly, for any loss or damage arising from under this limited warranty or otherwise, regardless of cause or origin, seller's maximum liability shall not in any case exceed the purchase price of the product, which shall be complete and exclusive remedy against seller. No employee or representative of Seller is authorized to change this warranty in any way or grant any other warranty.

WARNING: This product should be tested at least once a week.

FCC Note (for 433MHz versions only)

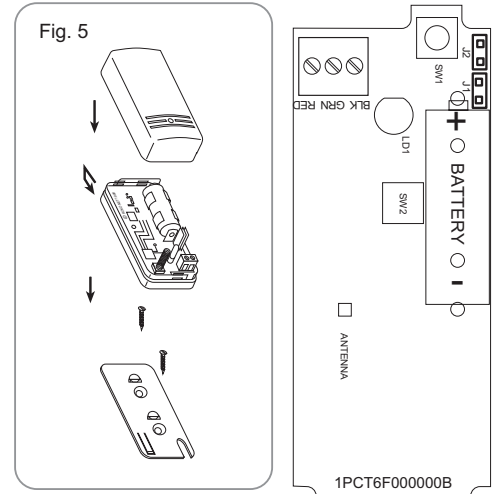
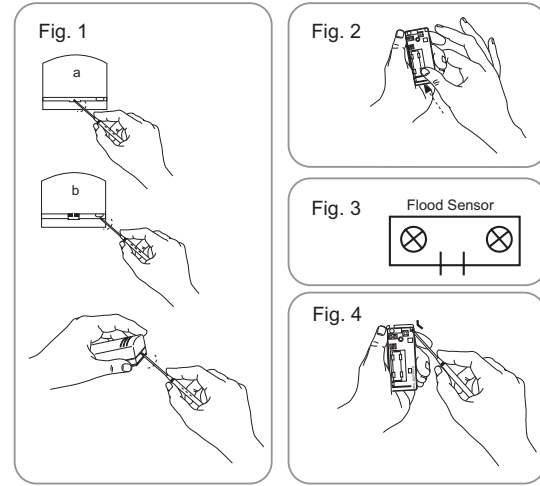
This device complies with Part 15 of the FCC Rules. Operation is subject to the following two conditions:

1. This device may not cause harmful interference and
2. This device must accept any interference received, including interference that may cause undesired operation.

FCC ID: JE4RW71X433

This equipment has been tested and found to comply with the limits for a Class B digital device, pursuant to Part 15 of the FCC rules. These limits are designed to provide reasonable protection against harmful interference in a residential installation. This equipment generates, uses and can radiate radio frequency energy and, if not installed and used in accordance with the instructions, may cause harmful interference to radio communications. However, there is no guarantee that interference will not occur in a particular installation. If this equipment does cause harmful interference to radio or television reception, which can be determined by turning the equipment off and on, the user is encouraged to try to correct the interference by one or more of the following measures:

- a) Reorient or relocate the receiving antenna.
- b) Increase the separation between the equipment and receiver.
- c) Connect the equipment to an outlet on a circuit different from that to which the receiver is connected.
- d) Consult the dealer or an experienced radio/TV technician.



RTTE Compliance Statement

Hereby, RISCO Group declares that this equipment is in compliance with the essential requirements and other relevant provisions of Directive 1999/5/EC. For the CE Declaration of Conformity please refer to our website: www.riscogroup.com.



© RISCO Group 12/08

5INT6F D

ENGLISH

GENERAL DESCRIPTION

The wireless flood detector is a fully supervised detector used to detect the presence of water based liquids at any desired location such as basements or water tanks.

The detector is comprised from 2 parts: Wireless transmitter and flood sensor which are connected by 2.4m cable.

The detector operates with RISCO Group's programmable wireless receivers.

MAIN FEATURES

- Flood Alarm Report: In the event of a flooding event, the detector sends an alarm event 20 seconds after detection. Restore event will be sent 20 seconds after the problem is fixed.
- Flood Sensor Protection: When the detector recognizes a problem with the flood sensor (short or cut) it sends tamper alarm event 6 seconds after detection. A restore message is sent 6 seconds after the problem is solved.
- Tamper Protection: Back and cover tamper protection: Tamper alarm is sent immediately.
- Supervision: The detector is fully supervised. It sends a periodic supervision message at times defined by jumper J2.
- Frequency: 868.65 MHz or 433.92 MHz.
- Operating Range: Up to 300m (1000 ft) outdoors.
- Battery Supervision: On low battery condition the detector sends an automatic low battery report as part of any transmission.

LED INDICATION

On: The LED turns on each time the detector transmits (alarm, tamper or supervision).
Blink: Low battery condition. The LED will blink on each transmission.

JUMPER SETTINGS

Jumper	Description	Jumper on:
J1	LED Enable / Disable	1 pin: LED disabled 2 pins: LED enabled (Default)
J2	Supervision Time	1 pin: Every 65 minutes 2 pins: Every 15 minutes (Default)

COMMUNICATION SETUP

The flood detector must identify itself to the receiver by writing its coded message into the receiver's address memory. (Uses more than 16 million pseudo randomly selected preset code addresses for setup).

1. Set the receiver to learning mode.
2. Open the transmitter's front cover (Figure 1).
3. Remove the battery from the insulation material (Figure 2) and place it between the battery clips. Pay attention to the polarity of the battery.
4. Send a Write message by pressing both tamper buttons (back and cover) for at least 3 seconds.

- Supervision de la batterie (pile) : en cas d'affaiblissement de la pile, le détecteur accompagnera toute forme de transmission, d'un rapport automatique de batterie faible.

INDICATIONS LED

Position allumée (ON) : la diode LED s'allume chaque fois que le détecteur transmet un message (alarme, autoprotection ou supervision).

Position clignotante : pile faible (batterie faible) : la diode LED clignote à chaque transmission.

REGLAGE DES CAVALIERS

Cavalier	Description	Cavalier branché (ON)
J1	Active/désactive la diode LED	1 broche : diode LED désactivée 2 broches : diode LED activée (réglage par défaut)
J2	Intervalle de supervision	1 broche : toutes les 65 minutes 2 broches : toutes les 15 minutes (réglage par défaut)

REGLAGE DE LA COMMUNICATION

Le détecteur d'inondation doit se faire identifier par le récepteur du système en introduisant son message crypté dans la mémoire d'adresses (plus de 16 millions d'adresses de codes pré-réglées et sélectionnées de manière pseudo aléatoire par l'installation).

1. Mettez le récepteur en mode d'apprentissage.
2. Ouvrez le couvercle frontal du transmetteur (Figure 1).
3. Retirez la pile du bloc isolant (Figure 2) et mettez-la en place en respectant la

5. Vérifier que le transmetteur a bien été identifié par le récepteur.
6. Set the receiver to normal mode operation.

INSTALLATION

Select a mounting location that is suitable both for the transmitter and the flood sensor as follows:

Transmitter Mounting Location:

- Place the transmitter at the highest possible position to improve communication and prevent from coming wet in the event of flooding.
- Test the transmitter's communication quality by generating an alarm and verifying that the receiver has received it. If the alarm signal is not detected, reposition the transmitter and try again.

Flood Sensor Mounting location:

The flood sensor should be placed in a position where water will accumulate rapidly in an event of flooding.

After selecting the mounting location:

1. Attach the flood sensor in horizontal position near the floor with the 2 pins facing downwards (Figure 3) using the enclosed screws or double-sided sticker.
2. Secure the flood sensor cable to the wall. (Note: It is recommended to place the flood sensor cable inside metal or plastic pipe)

- polarité indiquée.
- 4. Envoyez un message d'écriture en appuyant simultanément sur les deux touches d'auto-protection (arrière et couvercle) pendant au moins 3 secondes.
- 5. Vérifiez que le transmetteur a bien été identifié par le récepteur.
- 6. Mettez le récepteur en mode normal.

INSTALLATION

Choisissez un lieu d'installation qui soit favorable à la fois au transmetteur et au capteur d'inondation. Pour cela, veuillez suivre les indications suivantes :

- **Lieu d'installation du transmetteur :**
 - Placez le transmetteur le plus haut possible de façon à améliorer la communication et éviter qu'il ne soit mouillé en cas d'inondation.
- Testez la qualité de communication du transmetteur en produisant une alarme et vérifiant que le récepteur l'a bien captée. Si le signal d'alarme n'a pas été détecté, repositionnez le transmetteur et réessayez.

Lieu d'installation du capteur d'inondation :

Le capteur doit être placé en un endroit où le niveau d'eau monte rapidement en cas d'inondation.

Après avoir choisi les lieux d'installation :

1. Fixez le capteur en position horizontale à proximité du sol, les 2 broches tournées vers le bas (Figure 3). Utilisez les vis livrées ou l'autocollant double face.
2. Fixez le câble du capteur au mur.
(Remarque : il est recommandé de protéger le câble du capteur en le gainant d'un tube métallique ou plastique).
3. Séparez la paroi arrière du transmetteur et fixez-la au mur (Figures 4 + 5).

SPECIFICATIONS

Electrical	
Current consumption	10µA standby
Frequency	868.65 MHz or 433.92 MHz
Modulation	ASK
Battery Type	CR123 3V Lithium
Battery life	5 years
Physical	
Size	81 x 35 x 32 mm (3.2 x 1.37 x 1.27 in.)
Cable length between transmitter and flood sensor	2.4 m
Environmental	
RF Immunity	According to EN50130-4
Operating temperature	0°C - 55°C (32°F to 131°F)
Storage temperature	-20°C - 60°C (-4°F to 140°F)
Maximum humidity	95% non-condensing

MODELS AVAILABLE:

Part Number	Description
RWT6FW43300A	WL flood detector 433.92 MHz - WHITE
RWT6FW86800A	WL flood detector 868.65 MHz - WHITE

FRANÇAIS

Description générale

Entièrement supervisé, le détecteur d'inondation sans fil est conçu pour déceler la présence de liquides à base d'eau en tout endroit souhaité, par exemple dans les sous-sols ou dans les réservoirs d'eau.

Le détecteur d'inondation comprend 2 éléments : un transmetteur sans fil et un capteur d'inondation reliés par 2,4 m de câble.

Son fonctionnement est adapté aux récepteurs programmables sans fil du Groupe RISCO.

CARACTERISTIQUES PRINCIPALES

- Signal d'alarme en cas d'inondation : en cas d'inondation, le détecteur envoie un signal d'alarme 20 secondes après avoir détecté l'événement. Le signal de retour à la normale (rétablissement) est envoyé 20 secondes après résolution du problème.
- Protection du capteur : lorsque le détecteur identifie, grâce à son capteur (en court-circuit ou en coupe-circuit), un problème d'inondation, il envoie un signal d'alarme d'autoprotection (tamper) 6 secondes après avoir détecté l'événement. Un message de retour à la normale est envoyé 6 secondes après résolution du problème.
- Autoprotection: autoprotection couvercle et paroi arrière : le signal d'alarme d'autoprotection est envoyé immédiatement.
- Supervision: ce détecteur est entièrement supervisé. Il envoie un message de supervision à intervalles réguliers, définis par le cavalier J2.
- Fréquence : 868,65 MHz ou 433,92 MHz.
- Domaine de fonctionnement : jusqu'à 300 m (1000 ft) en extérieur.

